

# CSLI Service Learning – Final Meeting, Spring 2012

Review the process  
Review the findings  
Analyze – Hypotheses

# Review the process – 1

## ▶ Evaluate the CSLI process

- Review – what exactly did CSLI do?
  - Generated questionnaire
  - Oriented students in intro meeting
    - Reviewed questionnaire with students
    - Reviewed nature of surveys/sampling
  - Trained students in telephone/marking instructions
  - Conducted telephone interviews
    - Target at least 400 completions
    - Accomplished – 440 completions
  - Issue and post on Web site – [already available](#)
  - Expect coverage in major media –Capital

# Review the process –2

## ▶ Questionnaire issues – initial contact

- Was the opening statement OK?
- *Hello, I'm a student calling from Anne Arundel Community College whose Center for the Study of Local Issues is conducting a survey on issues affecting Anne Arundel County Residents. Would you please take a few minutes to complete this survey*
- Suggestions?

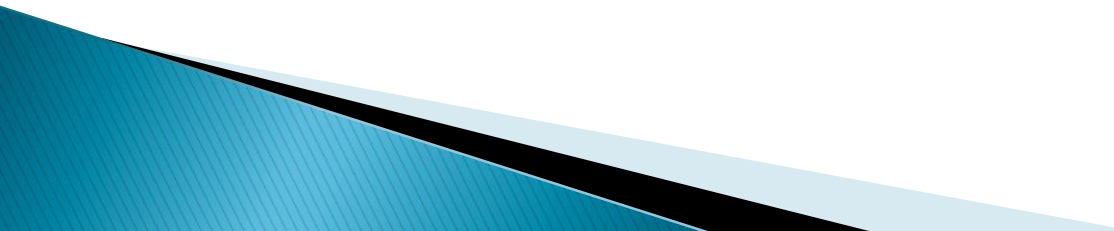
# Review the process – 3

## ▶ Questionnaire issues - questions

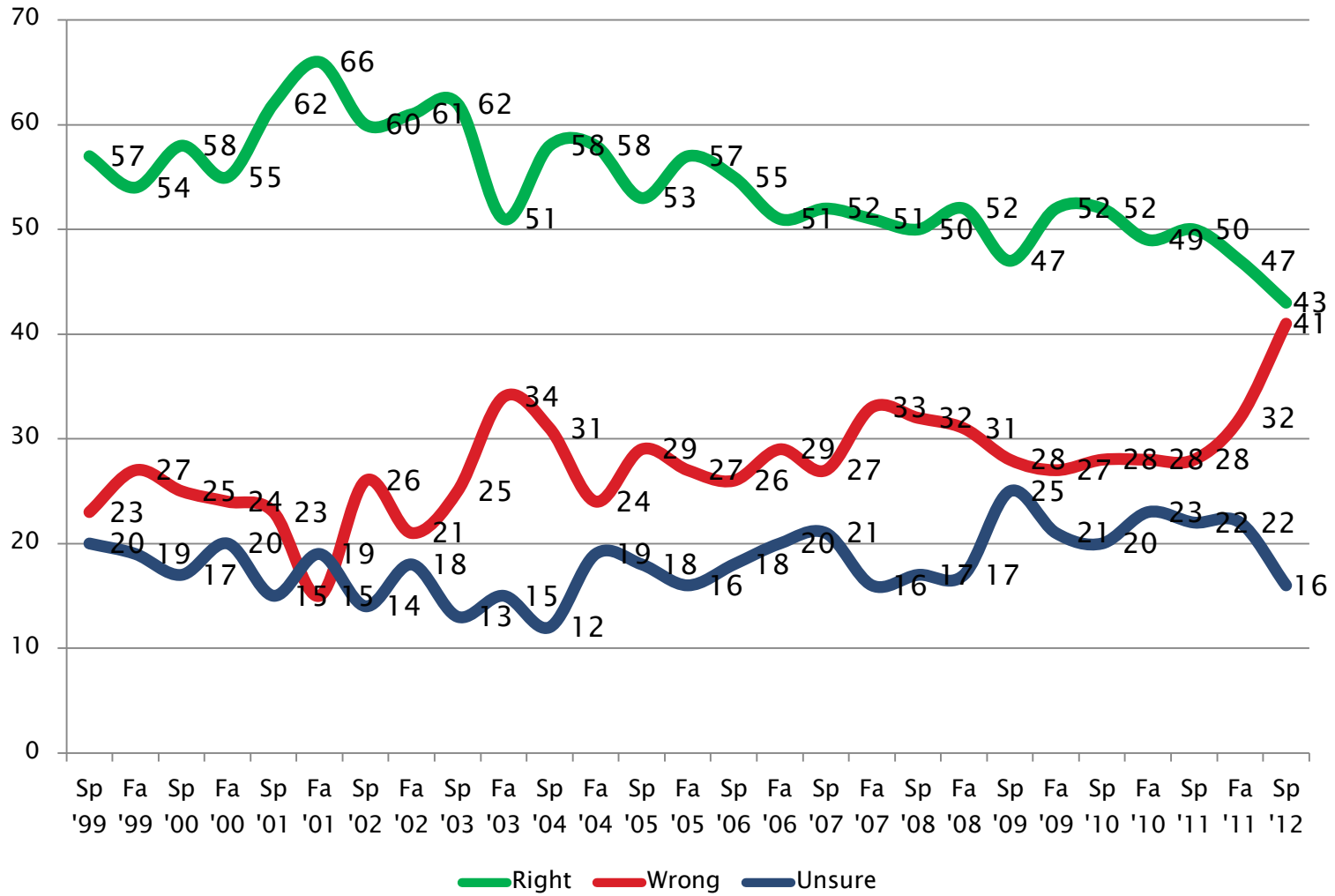
- **Did any specific questions give you more problems than others?**
  - Clarity
  - Public constantly asked for restatement
  - Vagueness of what is being asked
- **Did the respondents seem to think that the questions were generally interesting?**
- **Did the respondents think that the survey was too long or short?**
- **Other suggestions?**

# Review the process – 4

## ▶ **Public receptivity**

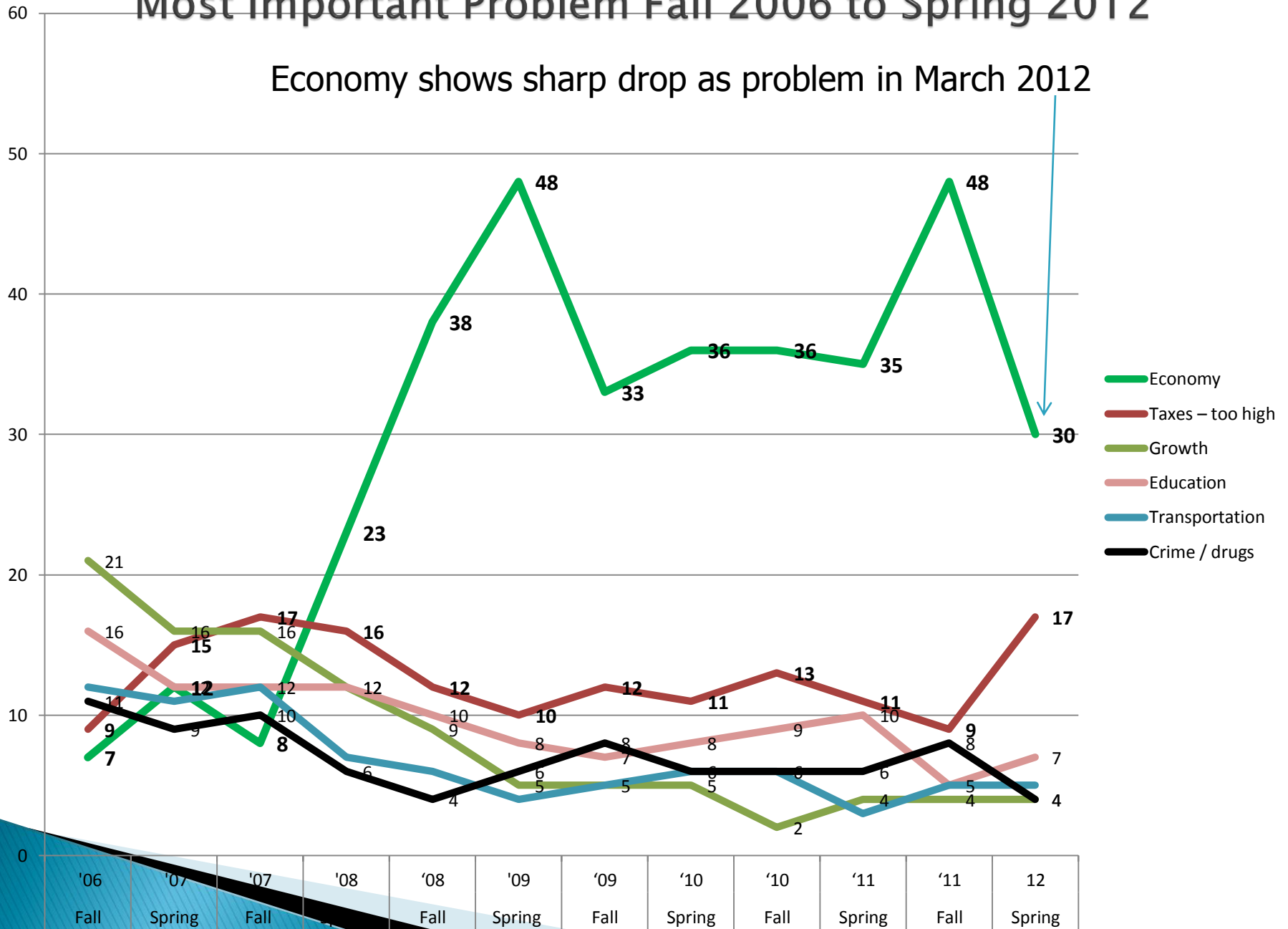
- **Were you surprised by how easy/hard** it was to obtain a completion?
  - Problems with **phone numbers**?
  - **Idle chatter** from respondents?
  - **Bias** among interviewers?
  - **Partial completions**?
  - **Other suggestions**
- 

# County: Right or Wrong Direction? Spring '99 to Spring '12

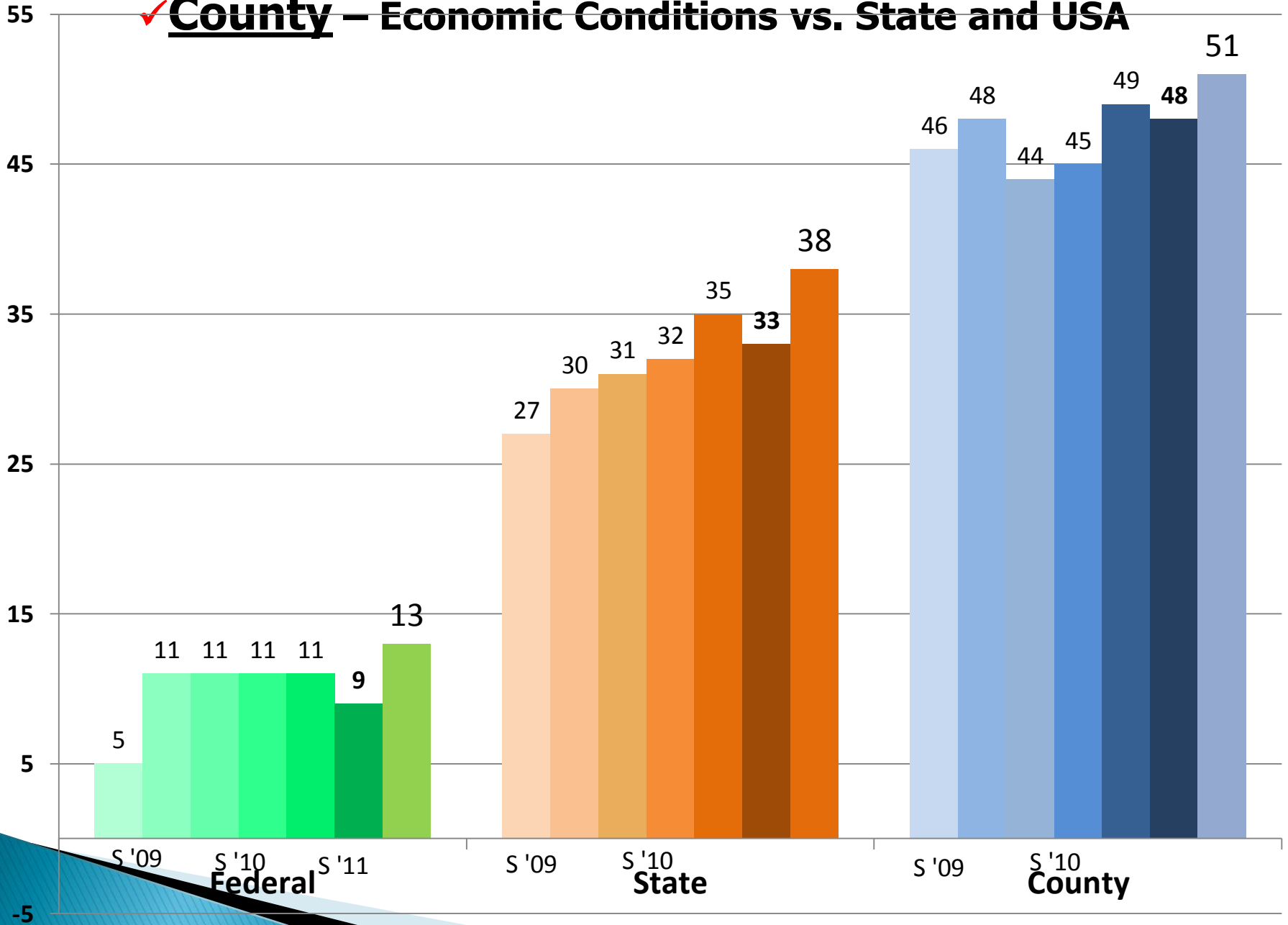


# Most Important Problem Fall 2006 to Spring 2012

Economy shows sharp drop as problem in March 2012



# ✓ County – Economic Conditions vs. State and USA



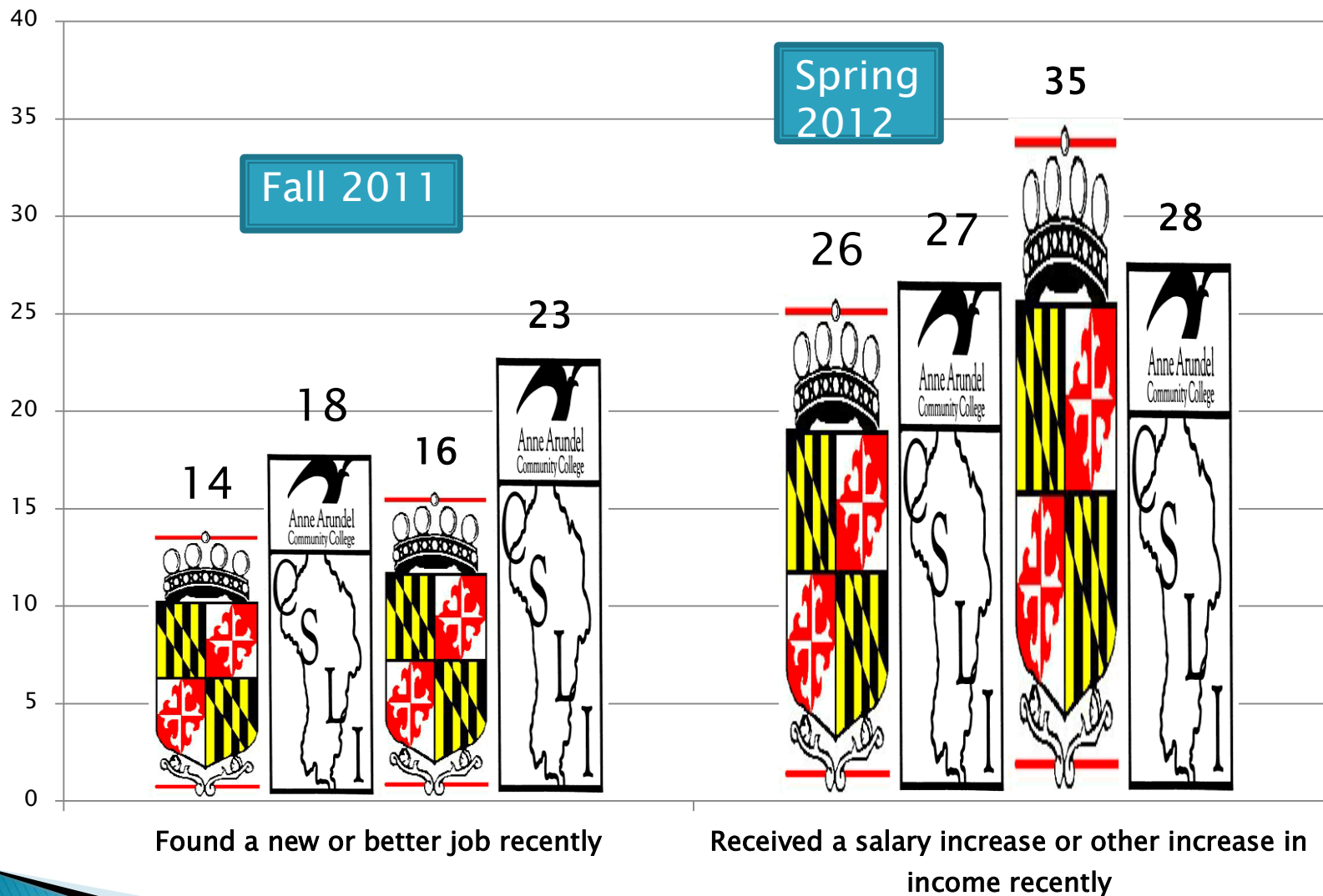




# % saying 'applies' sorted by Std. Deviation

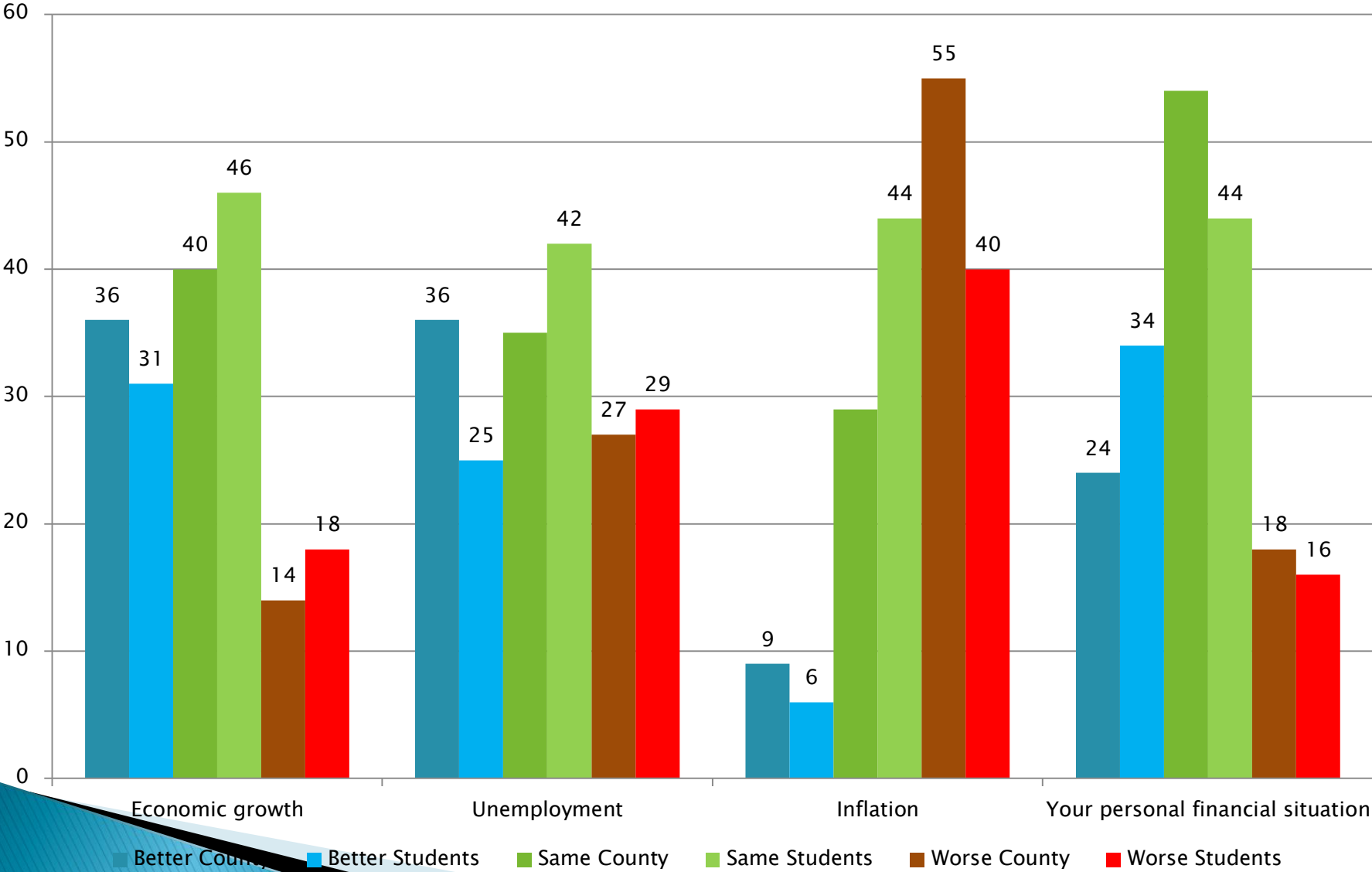
Condition	Spring '08	Fall '08	Spring '09	Fall '09	Spring '10	Fall '10	Spring '11	Fall '11	Spring '12	Sp '12-Fa '11	Std. Dev.
Significant losses in your stock or retirement accounts	n.a.	71	75	70	56	60	52	60	44	-16	<b>9.84</b>
Hard to afford cost of transportation	40	32	21	17	21	24	41	30	36	6	<b>8.31</b>
Hard to afford cost of utilities such as electricity or gas	61	50	53	42	44	43	46	39	39	0	<b>6.80</b>
Received an income increase								26	35	9	<b>4.50</b>
Facing the possibility of unemployment	11	15	24	24	19	21	20	21	17	-4	<b>3.98</b>
Wages or salaries are not rising as fast as the cost of living	56	59	55	55	56	56	63	59	66	7	<b>3.65</b>
Unable to find affordable housing	21	11	12	13	15	10	14	11	15	4	<b>3.13</b>
Delay in making a major purchase such as a home or car	n.a.	n.a.	51	46	47	44	47	51	45	-6	<b>2.55</b>
Hard to afford cost of taxes*	47	58	59	59	63	60	63	58	63	5	<b>2.12</b>
Health care insurance is unavailable, too expensive or inadequate	35	30	29	33	32	34	35	32	32	0	<b>1.95</b>
Facing the possibility of house foreclosure or loss	6	4	6	8	7	7	9	8	8	0	<b>1.41</b>
Found a new or better job recently								14	16	2	<b>1.00</b>

# Economic conditions: Found job, got income increase County residents vs. AACC students



 County
  Students
  County
  Students

# Consumer confidence: County vs. students



## Support for Various Issues – Spring 2012

Proposal	Support Pop/Students	Oppose	Unsure	No answer
Legalizing same-sex marriage	46/59	47/26	5/13	2/1
Doubling the so-called 'flush tax' from \$30 to \$60 to help improve wastewater treatment	32/25	56/37	10/25	3/13
Increasing state funding by \$15 million for building affordable rental housing in Maryland	37/35	51/38	10/25	2/3
The next two proposals would require the county to take funds from other agencies or raise taxes to cover the costs.				
Shifting pension fund contributions for teachers from the state to the counties	22/25	63/29	12/42	3/4
Strictly enforcing the requirement that local schools be funded at no less than last year's levels	65/53	28/16	6/27	1/4
6% Increase in gasoline tax	21/11	74/66	5/30	0/0

## Support for Gambling– Spring 2012

	Agree	Disagree	Unsure	No answer
Adding a location in Prince George's County would increase state revenue significantly	47/51	44/19	7/30	1/0
Adding table games would increase state revenue significantly	51/55	38/19	9/26	2/0
Adding a site in Prince George's County would reduce revenue at the Arundel Mills site and therefore reduce Anne Arundel County's revenue	33/28	48/39	15/33	3/0
Adding more sites or table games would lead to significantly more gambling addiction	49/53	43/21	7/25	2/2
Expanding gambling by adding another site has more costs than benefits	42/27	43/37	11/35	4/2
Expanding gambling by adding table games has more costs than benefits	34/21	48/40	13/37	5/3

## Satisfaction with Various Government Agencies– Spring 2012

	Level of satisfaction (very satisfied, somewhat satisfied...)				Have you had any direct contact within two years	
	Very	Somewhat	Not very	NA	Yes	No
Fire Department	87/75	8	1	3	42/28	58
Police Department	67/42	21	8	4	45/52	55
Public libraries	68/61	16	6	10	67/76	33
Public schools	41/43	27	16	15	51/70	49
Permit application center	18/34	19	20	44	29/4	71
Department of Aging and Disabilities	30/46	12	9	49	25/13	75
Department of Health	36/39	16	9	40	32/33	68
	"No answers" removed below					
Permit application center	32	33	35	--		
Department of Aging and Disabilities	59	23	17	--		
Department of Health	59	26	14	--		

## Satisfaction with Various Government Agencies– Spring 2012

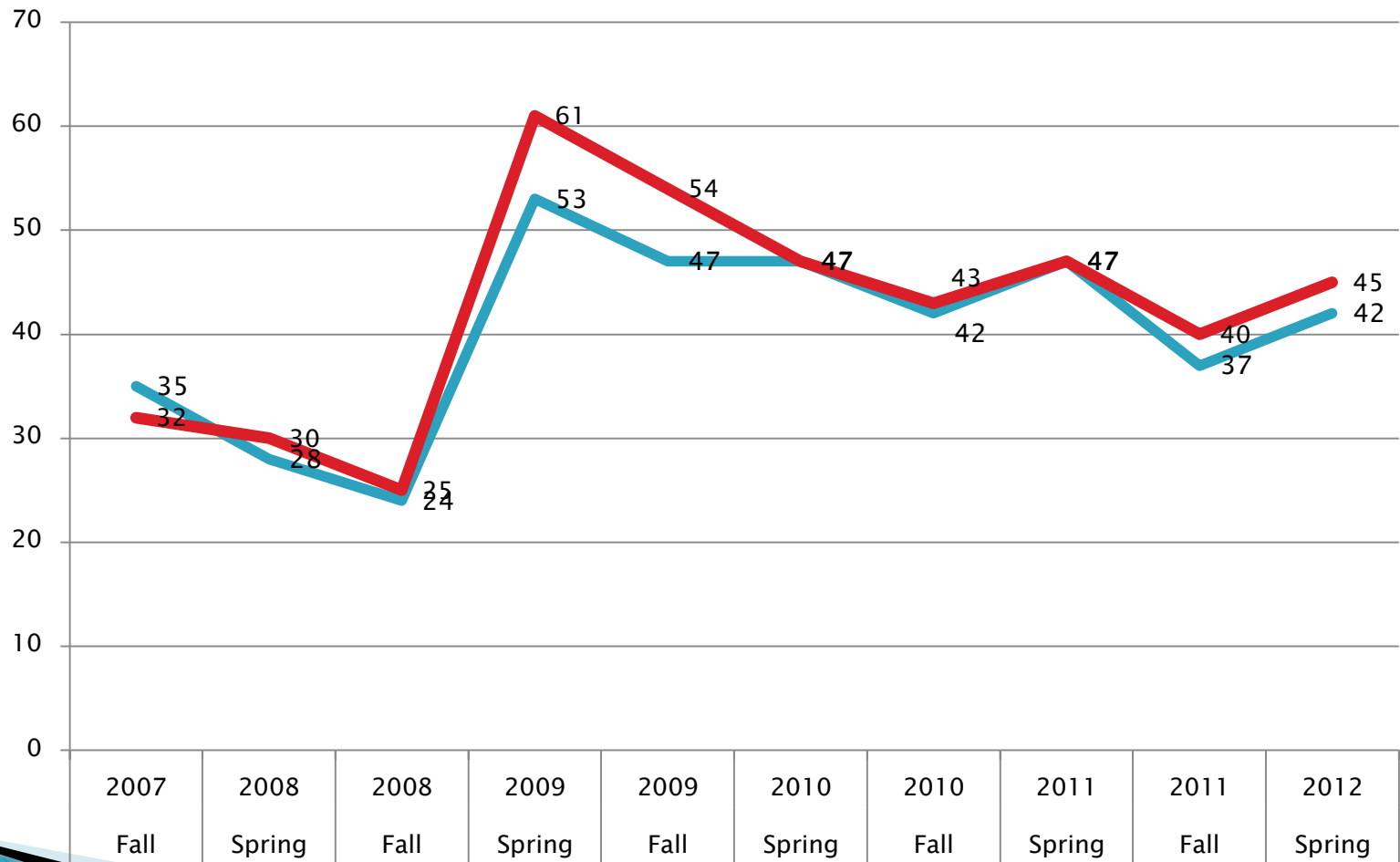
	Very serious	Somewhat serious	Not very serious	Unsure/NA	Total
Pollution of the Bay hurting the maritime industry and water-oriented tourism	66/41	21	11	2	100
Budget constraints limiting the ability of county government to provide services	43/57	28	19	10	100
An over-dependency on government employment	43/37	27	22	9	101
Air pollution causing illnesses	39/46	26	32	3	100
Changes in the quality of county schools	39/57	26	19	16	100
Rising sea levels threatening low lying areas with flooding	31/45	33	27	9	100



# Presidential job approval

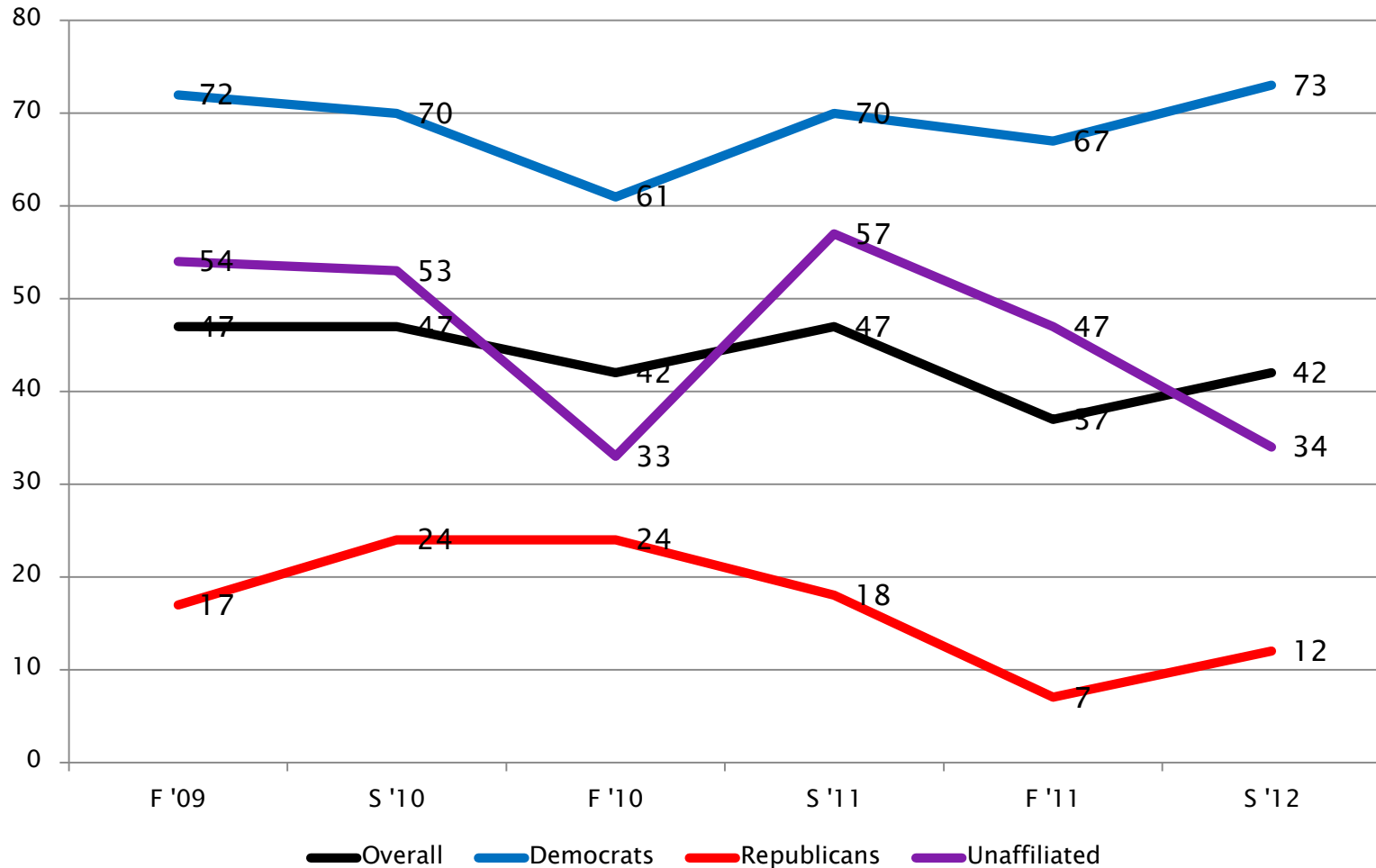
Fall 2007 to Spring 2012

CSLI Gallup

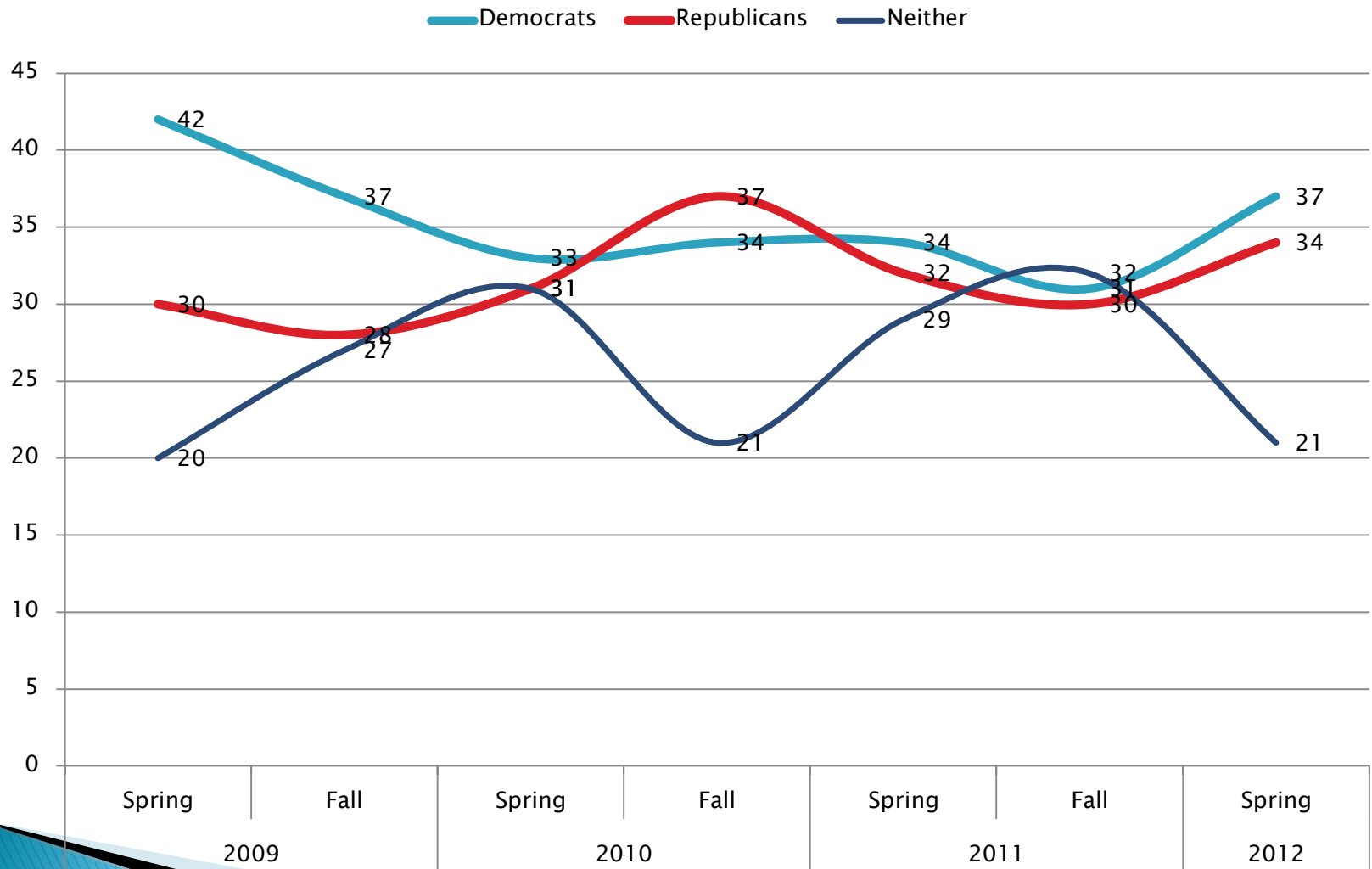


# Presidential Job Approval by Party Registration

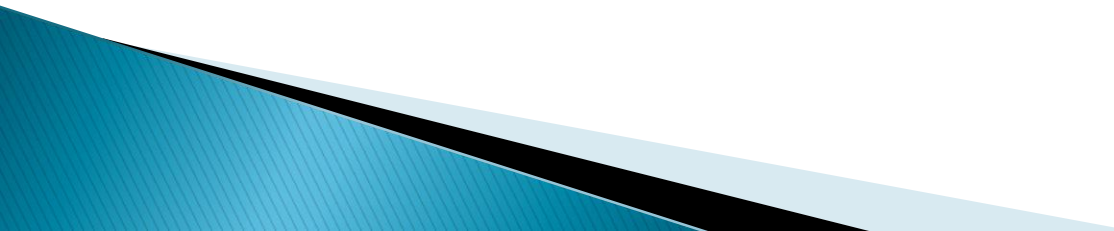
## Fall 2009 to Spring 2012



# Trust in Political Parties – Spring 2009 to Spring 2012



# Exercise: Develop Hypotheses

1. Identify a dependent variable – attitude, preference
  2. Identify an independent variable – a social/demographic characteristic
  3. Specify a likely relationship between the two based on a “theory” or hunch you have about people and attitudes
- 

# Test Hypotheses using SPSS

1. Login
2. Go to CSLI Web site: <http://www2.aacc.edu/csl>
3. Double click on CSLI\_Fall\_2011\_Data.sav
4. Weight the dataset /data/weight cases/weight cases by Weight
5. Cross-tabs - /Analyze/Descriptive Statistics/Crosstabs
6. Find **Income75** – click once on it to select it then use arrow to place in columns box
7. Find **'v4.2'** or **'v4.3'** – click once to select it then use arrow to place in rows box
8. Click on "cells" and then click on Percentages "columns" then OK
9. Click on "statistics" and then click on Nominal "Phi and Cramer's V" OK
10. Click on OK in main crosstabs dialog box
11. Check results: Did a higher percentage of under \$75k agree with "unemployment" than those over \$75k?"  
**Were the results statistically significant** – were the Phi and Cramer's V values under the column "Approx. Sig" **under .05**?
12. If the answer is yes to both these questions, then it is possible that your hypothesis is correct – you have disproved the 'null hypothesis'
13. Try it again with the "significant losses in stocks and retirement accounts" variable (v4.3)
14. Continue with other hypotheses
15. In the last 10 minutes, we will go around the room asking you to tell us your most interesting finding