

Press Release: March 16, 2007
Center for the Study of Local Issues
Anne Arundel Community College
101 College Parkway, Arnold MD, 21012-1895
Contact: Dan Nataf 410-777-2733

Survey Shows Public Generally Positive about Effects of BRAC on County

A survey conducted March 5-8, 2007 by the Center for the Study of Local Issues (CSLI) at Anne Arundel Community College found that 54 percent of respondents thought that the effects of the base realignment and closure process upon the county will be positive. Only 24 percent thought the effect would be mostly negative, while another 11 percent thought it would be both negative and positive (8 percent were unsure, 4 percent gave no answer). A substantial number (69 percent) had heard that the BRAC process would likely add several thousand new jobs to the Fort Meade area. However, 44 percent thought that the county's transportation system would handle the influx "not very well," with only 10 percent thinking the system could handle it "very well" (39 percent said "somewhat well" and 7 percent gave no answer.)

"The public appears fairly attentive to the long-term impact of BRAC and chooses to be optimistic about the overall contribution of the influx of jobs to the county, but there remains significant apprehensiveness about the county's ability to provide adequate facilities to accommodate new employees and residents," said Dan Nataf, the center's director. More BRAC-related findings are detailed in a section that follows.

Summary of Other Findings

The CSLI survey evaluated a range of other issues including perceptions of the public schools, taxes, school board selection options, roadside solicitation, smoking bans and repeal of the death penalty. The survey included benchmark questions about the most important issues facing Anne Arundel County residents, the right/wrong direction of the county, and the state of the local economy. These items are summarized below and explained in detail in the sections that follow.

- **Most Important Problem:** Growth and high taxes were cited as the most important concerns.
- **Right Direction/Wrong Direction:** There was little change in the percentage saying that the county was headed in the right direction, moving from 51 percent in fall 2006 to 52 percent in spring 2007.
- **Economic Conditions:** There was no change in the percentage of the sample saying that the county's economic conditions were "excellent" or "good," staying at 71 percent.
- **Anne Arundel County Public Schools – Perceptions, Budgets:** One half of the respondents said they favored "a school system which is absolutely top quality regardless of the cost" compared to the 36 percent favoring "a school system which is of good quality but doesn't increase my taxes."

Regarding the proposed 17 percent increase in the county public school system's budget, 25 percent said, "Fully fund this proposal by raising some county taxes," while one-fifth said, "Fully fund this proposal by reducing other county services." A plurality (43 percent) wanted to "partially fund this

proposal to the extent possible without increasing taxes or reducing other county services.”

- **School Board Selection Process:** A majority (61 percent) of respondents were “not very familiar” with the issue of “changing the method of selecting the Anne Arundel County school board.” One-fifth wanted to retain the current selection system. The sample was split almost evenly, with 42 percent favoring an elected school board and 40 percent opting for a board selected by citizens representing elected officials and other community groups such as the teachers’ union and the chamber of commerce.

- **Paying for County Financial Challenges:** Asked how to accommodate anticipated fiscal pressures to be felt by the county, 31 percent favored paying for such expenses “without raising any taxes or fees, even if the county has to cut back on other public services,” while a majority (55 percent) agreed the “county should pay for these expenses by a combination of cost reductions and tax increases.”

- **Trusting the County to get it Right on Taxes:** In response to the question “Do you trust the county to find the right balance between paying for these expenses and keeping taxes as low as possible?” a slight majority said they were disinclined to trust the county (52 percent), compared to 42 percent trusting the county.

- **BRAC’s Impact on the County:** A variety of questions about how to accommodate new workers’ housing needs were posed. Majorities favored focusing more resources on developing older northern and western parts of the county (75 percent) and increasing impact fees (69 percent). The sample was evenly divided on “spending more on public transportation than improving the roads” (46 percent agreed and disagreed) and expediting the process of getting a building permit (45 percent agreed, 48 percent disagreed). A majority was against increasing the number of units that can be built on land (57 percent disagreeing, 37 percent agreeing).

- **State and County Legislative Proposals:** Significant majorities favored banning roadside solicitation (76 percent agreeing), increasing the cigarette tax by one dollar to help pay for increasing health insurance coverage to the uninsured (72 percent agreeing), and banning smoking in all restaurants and bars (68 percent). A thin majority (51 percent) favored having all new cars sold in Maryland conform to California pollution standards. Only one-third approved the repeal of the death penalty in Maryland.

- **President George W. Bush’s Job Approval:** There was a 5 percentage point drop (to 34 percent) in those saying that they approved of President Bush’s job performance.

- **Flu Vaccinations:** About half (49 percent) said they typically received flu vaccinations, with 78 percent of those saying they had obtained such a vaccination this season. Only 7 percent received such a vaccination for the first time. A plurality (49 percent) received it at a doctor’s office.

- **Avian Flu:** Most (56 percent) were not very concerned about the possibility of an avian flu outbreak.

Methodology: The survey polled a random sample of 529 county residents who were at least 18 years old and living in their primary residence. The margin of sampling error was about 4.25 percent. The dataset was weighted by demographic variables (gender) to better represent the general population.

Most Important Problem – Growth and the Education

Each CSLI survey starts by asking the public an open-ended question: “What do you think is the most important problem facing the residents of Anne Arundel County at the present time?” Typically, growth, education, transportation, crime and taxes are the top items cited. This pattern was repeated this spring (see Table 1 and Chart 1.)

Compared with last fall, there was a decrease in concern about growth (from 21 to 16 percent) and transportation/traffic (from 12 to 11 percent). The calculation of the percentage for the “economy” was changed from previous surveys by having specified a new category “lack of affordable housing” as a

distinct check-off on the questionnaire, and then adding the percentage citing it to the percentage citing other economic issues. This resulted in 12 percent citing this new “economy” category, three percentage points over the historic average using the old category. Several respondents mentioned “energy prices,” “electricity” and “gasoline” as areas of concern regarding the economy.

The largest increase from last fall was in the percentage citing “taxes” as a primary concern, moving from 9 to 15 percent, 3 percent above its recent average. “It is possible that recent media coverage of structural deficits in the state budget along with fiscal challenges facing the county have raised the level of concern among citizens,” Nataf said.

Other categories such as crime, the environment and drugs showed little change. Education dropped four percentage points to 12 percent.

Table 1: Percentage Citing Item as County’s “Most Important Problem” 2003-07

Problem	Fall '03	Spring '04	Fall '04	Spring '05	Fall '05	Spring '06	Fall '06	Spring '07	Mean
Growth/overpopulation - too much development	15	8	14	18	22	16	21	16	16
Taxes – too high	14	13	10	13	10	10	9	15	12
Education, problems with schools	17	22	12	16	12	13	16	12	15
Traffic congestion/problems	11	10	17	9	14	9	12	11	12
Economy – (e.g., no jobs, high cost of living, business closing or losses and including a specific category “lack of affordable housing” for the first time in spring 2007 – cited by 3.7%)	8	12	8	7	7	15	7	12	10
Crime	5	4	6	5	6	11	11	9	7
Unsure/no answer	9	10	13	11	11	8	7	9	10
Other answer	11	8	9	10	8	6	10	6	9
Environment (e.g., air or water pollution, saving the Bay)	7	4	5	5	6	6	4	6	5
Drugs	1	4	3	3	2	4	3	2	3
Inefficient government, wasteful spending	1	2	1	1	1	1	3	2	2
Terrorism	0	1	1	0	1	1	0	1	1
Corruption in government/politicians are bad	1	2	1	1	0	1	0	0	1
Total	100	100	100	99	100	101	103	101	101

Note: Table 2 and Chart 1 below combine “growth” and “transportation” into “growth” as well as “crime” and “drugs” into “crime” for reporting and comparison purposes. All values in tables are in percentages unless otherwise indicated. In this and all other tables, totals do not equal 100 percent due to rounding.

Chart 1: Most Important Issue - Trends

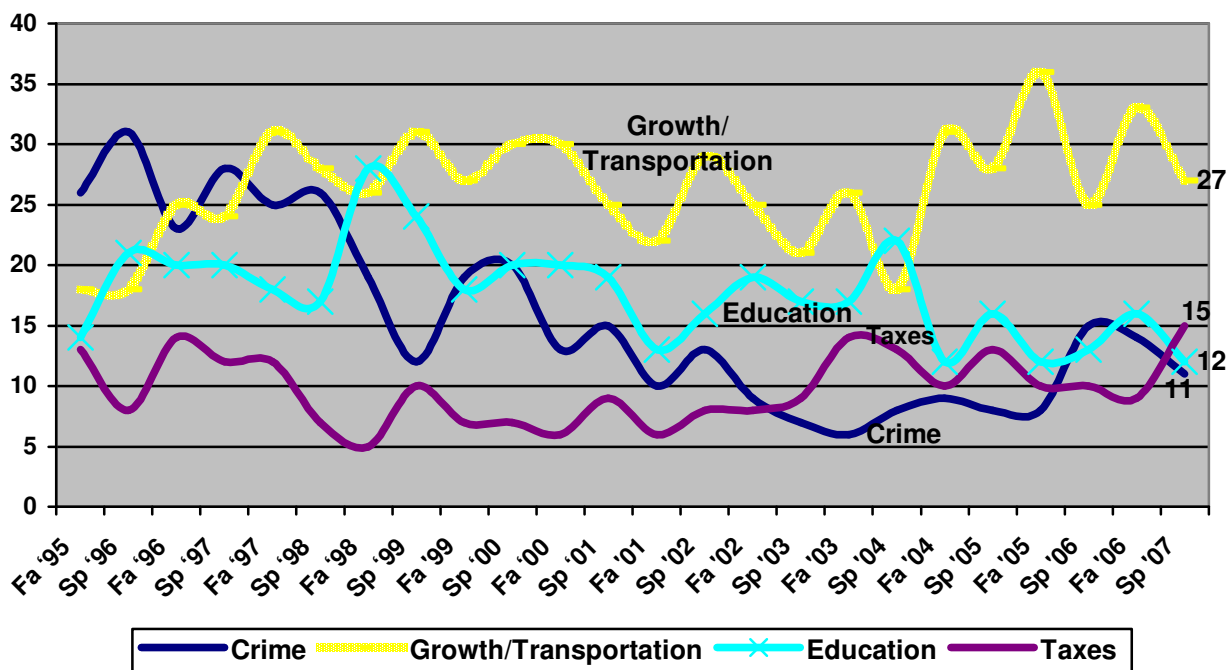


Table 2: “Most Important Problem Facing Residents” Spring 1997 to Spring 2007

Problem	Sp '97	Fa '97	Sp '98	Fa '98	Sp '99	Fa '99	Sp '00	Fa '00	Sp '01	Fa '01	Sp '02	Fa '02	Sp '03	Fa '03	Sp '04	Fa '04	Sp '05	Fa '05	Sp '06	Fa '06	Sp '07
Crime	28	25	26	19	12	19	20	13	15	10	13	13	7	6	8	9	8	8	15	14	11
Growth/Transportation	24	31	28	26	31	27	30	30	25	22	28	25	21	26	18	31	27	36	25	33	27
Education	20	18	17	28	24	18	20	20	19	13	16	19	17	17	22	12	16	12	13	16	12
Taxes	12	12	7	5	10	7	7	6	9	6	8	8	9	14	13	10	13	10	10	9	15

County – Right or Wrong Direction?

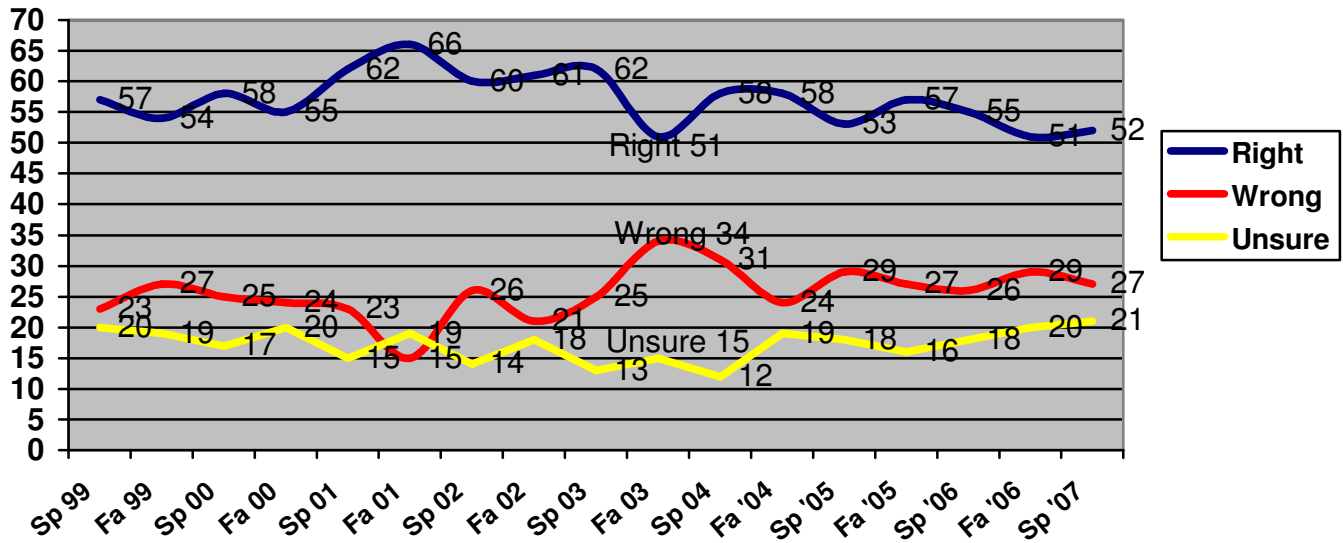
The survey included a CSLI benchmark question whose results are seen on Table 3: “Overall, would you say that the county is headed in the right direction or in the wrong direction?”

Chart 2 shows that until fall 2003, the results did not vary much, hovering around 60 percent. However at that time, a sharp drop in those saying the “right” direction corresponded to the start of a lower overall range. There was little change from fall to spring, with the percentage saying “right direction” rising from 51 to 52 percent.

Table 3: Anne Arundel County - Right vs. Wrong Direction

Response	Percent
Right direction	52
Wrong direction	27
Unsure	21
Total	100

Chart 2: County Trend - Right or Wrong Direction



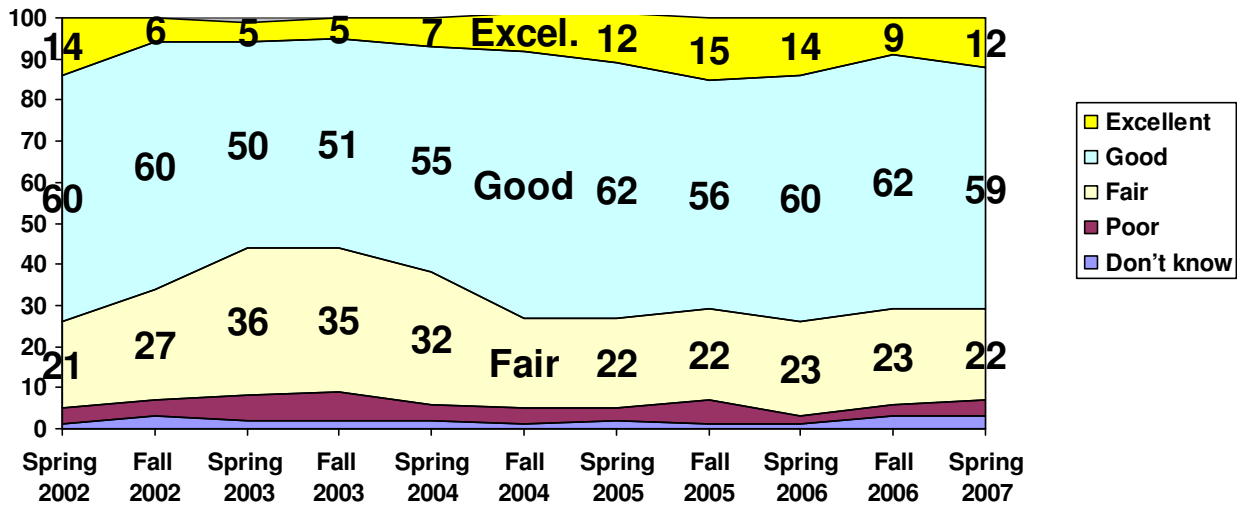
Economic Conditions – No Major Changes

There was little change in the public’s perception of general economic conditions in the county. The percentage saying “excellent” or “good” stayed at 71 percent, with a small 3 percent shift in favor of those saying “excellent.” In spring 2004, the combined value was only 62 percent, showing that the upward trend first seen in fall 2004 has not been significantly altered over two and one half years (see Table 4 and Chart 3). Nataf said, “The public perceives economic conditions as quite favorable in the county. It continues to hold a strong advantage over perceptions of the national economy, which according to recent Gallup polls is perceived as “excellent” or “good” by only 43 percent.”

Table 4: Perceptions of Economic Conditions

	Spring 2002	Fall 2002	Spring 2003	Fall 2003	Spring 2004	Fall 2004	Spring 2005	Fall 2005	Spring 2006	Fall 2006	Spring 2007	Mean
Excellent	14	6	5	5	7	9	12	15	14	9	12	10
Good	60	60	50	51	55	65	62	56	60	62	59	58
Fair	21	27	36	35	32	22	22	22	23	23	22	26
Poor	4	4	6	7	4	4	3	6	2	3	4	4
Don't know	1	3	2	2	2	1	2	1	1	3	3	2
Total	100	100	99	100	100	101	101	100	100	100	100	100

Chart 3: Economic Conditions



Anne Arundel County Public Schools: Perceptions, Budgets

The survey asked respondents to evaluate two propositions about public schools in Anne Arundel County. The first suggested a strong financial commitment to the excellence of the school system: “I favor a school system which is absolutely top quality regardless of the cost.” The second implied a lower standard based upon a concern about higher taxes: “I favor a school system which is of good quality but doesn’t increase my taxes.” Respondents were given the option of suggesting another answer.

Table 5: Perception of Anne Arundel County Schools Quality/Price Trade-off

Perceptions	Percentage
I favor a school system that is absolutely top quality regardless of the cost	50
I favor a school system that is of good quality but doesn’t increase my taxes	36
Other volunteered answer	7
No answer	7
Total	100

As indicated on Table 5, one-half of the respondents affirmed their preference for the excellence at any cost option, while a sizable minority (36 percent) was more attracted to the good but without higher taxes approach. Those who volunteered another approach included statements such as “support charter schools,” “no relationship between finances and school quality,” “problems are not due to lack of funds,” “possible to have top quality without tax increase” and “more accountability.”

Table 6 shows the differences among those with children in the county public schools and those without and those with children in private schools. While a predictable strong majority favored the excellence at any cost option (61 percent) among those with children in the public schools, only 49 percent of those with children in private schools supported the same option. Moreover, a larger percentage of those with children in private schools offered “outside the paradigm” answers rejecting or modifying the assumption of quality/cost offered in the question.

Gender differences were statistically significant, with males showing a more extreme skepticism of the quality/cost linkage and a greater hostility to higher taxes than women. “This is probably another

expression of the ‘gender gap,’ which finds that women are more likely to support liberal policy prescriptions than men,” Nataf said.

Table 6: Perception of Anne Arundel County Schools Quality/Price Tradeoff by Respondent Traits

Perceptions	Kids in AACPS	Kids in Private	Both public/private	No Kids	Males	Females	Overall
I favor a school system that is absolutely top quality regardless of the cost.	61	49	47	46	46	55	50
I favor a school system which is of good quality but doesn’t increase my taxes.	33	28	26	39	39	32	36
Other volunteered answer	5	13	21	8	9	5	7
No answer	1	10	5	7	6	7	7
Total	100	100	99	100	100	99	100

Funding the Proposed School Budget

A follow-up question on the proposed 17 percent funding increase stated “the increase was meant to cover items like increased security, the expansion of advanced learning programs and higher teacher salaries.” Respondents were asked to assess three alternatives and indicate “which of the following do you think would best serve the county?”

The first two choices were to *fully* fund the proposal either by “raising some county taxes” or “reducing other county services.” A third choice said “*partially* fund this proposal to the extent possible without increasing taxes or reducing other county services.” Again, respondents were given the option of a volunteered answer.

As shown on Table 7, the public offered a mixed message. Under half (45 percent) agreed with the notion of fully funding the proposal, but was split as to whether this would be best accomplished by raising taxes (25 percent) or reducing other county services (20 percent). About an equal percentage (43 percent) found the partial funding option desirable to the degree that taxes and other services were left unchanged.

Table 7: Perception of Anne Arundel County Schools Quality/Price Trade-off

Perceptions	Percentage
Fully fund this proposal by raising some county taxes	25
Fully fund this proposal by reducing other county services	20
Partially fund this proposal to the extent possible without increasing taxes or reducing other county services	43
Other volunteered answer	6
No answer	7
Total	100

Volunteered answers included “create a separate school tax,” “use lottery money,” “use state money,” “use money from slots,” “provide more money to parents not schools,” among others.

Unlike the quality/cost question, there were no statistically significant differences among those sending their children to public or private schools, nor between men and women. There was a statistically significant difference among those with children in either public or private schools and those without children in schools, with the former more favorable to either ‘fully fund’ the proposal (51 percent) compared to only 41 percent among the latter.

According to Nataf, “These results show the lack of public consensus on basic issues of school funding and the general vision for the public school system. Proponents of more school spending or lower taxes can find evidence of public support.”

School Board Selection Process

Keeping the focus on Anne Arundel County’s public school system, questions were asked about the method of selecting the school board. First, respondents were asked about their familiarity with the issue of “changing the method of selecting the Anne Arundel County school board.” Given the discussion over the years about changing the school board selection system, Table 8 suggests that the issue did not percolate to the general public to any great degree.

Table 8: Familiarity with School Board Selection Process as an Issue

Response	Percent
Very familiar	12
Somewhat familiar	25
Not very familiar	61
No answer	2
Total	100

Even for those with children in either public or private schools, 54 percent were ‘not very familiar’ with the topic. “Clearly, this seems like an ‘inside the beltway’ discussion more than one striking a strong note in the public,” Nataf said.

The questionnaire then asked, “Do you think that the county should continue appointing school board members by using a convention to nominate candidates and having the governor make the final choice, or should some other system be used?” *Only 20 percent advocated using the current system*, although another 16 percent offered no answer. The 64 percent favoring “some other system” were then given a choice between an “elected school board” and “a school board selected by citizens representing elected officials and other groups in our county such as teachers’ unions and the chamber of commerce.”

There was no clear mandate issued by the public for either of these two options. As shown on Table 8.1, about an equal percentage favored the elected school board (42 percent) to the “group representation” model (40 percent). A significant minority (16 percent) offered no answer, while others suggested their own solutions such as “selection from councilmanic districts,” “elected by parents,” “nomination by county executive and confirmation by county council,” and “more numerous smaller districts.”

Table 8.1: Choice of Alternative School Board Selection Process

Response	Percent
Elected school board	42
A school board selected by citizens representing elected officials and other groups in our county such as teachers’ unions and the chamber of commerce	40
Other (volunteered) answer	3
No answer, didn’t know	16
Total	101

According to Nataf, this public indecisiveness “has been typical for many years.” In fall 1999, the public was queried about its preferences for school board selection – no option then received a

majority either, as shown on Table 9. The option with the largest plurality was the “elected school board” (49 percent), although the “elected school board with fiscal autonomy” option received the lowest percentage (35 percent). “The political elite can essentially pick nearly any alternative without fear that a disproportionate percentage of the public will either like or dislike the alternative chosen,” Nataf said.

Table 9: School Board Selection Methods – Fall 1999

Suggestion	Agree	Disagree	No answer
Keep the current school nominating convention system of appointing school board members unchanged	43	38	19
Keep the current system of appointing board members, but force the governor to choose from the top two nominees	39	44	17
Give the county executive the ability to appoint board members, subject to approval by the County Council	46	40	14
Give the County Council the ability to appoint board members, one per council district	46	37	17
Have board members elected by citizens, but without any independent control over taxes and school spending	49	36	14
Have board members elected, but give them control over school finances including taxes and spending	35	49	16

Paying for County Financial Challenges/Trusting County Government to Get it Right on Taxes

The survey asked two questions about the county and its ability to strike the right balance on taxation and spending. First, respondents were told, “The county will be facing several budget challenges over the next few years including funding public schools, roads, changes in accounting rules and increasing salaries to help recruit qualified government employees. Which of the following best reflects your views about how the county should deal with these challenges.” The choices were:

- (1) The county should pay for these expenses without raising any taxes or fees, even if it has to cut back on other public services;
- (2) The county should pay for these expenses by a combination of cost reductions and tax increases;
- (3) Some other volunteered answer.

The public was not inclined to discount entirely the need to pay for such expenses as it favored finding a way of paying through a combination of cost reductions and tax increases (55 percent). As indicated on Table 10, a relatively large percentage (8 percent) had an ‘out of paradigm’ answer, while another 7 percent had no answer. “The public might be sympathetic to an appeal for a small tax

increase based on rising county expenses, especially if it feels that the government has tried to tighten its belt as well,” Nataf said.¹

Table 10: How to Pay for Looming County Expenses

Response	Percent
The county should pay for these expenses without raising any taxes or fees, even if it has to cut back on other public services	31
The county should pay for these expenses by a combination of cost reductions and tax increases	55
Some other volunteered answer	8
No answer	7
Total	101

Second, the sample was asked, “Generally, do you trust the county to find the right balance between paying for these expenses and keeping taxes as low as possible?” The results again offered a mixed picture of the public’s faith in the county to efficiently provide services. A slight majority (52 percent) said that they did not trust the county to find the right balance, compared to the 42 percent saying that they did. According to Nataf, “While the public seemed at least somewhat supportive of the county’s need to finance its expenses through a revenue increase, clearly that support was tempered by a lingering skepticism that the county will not strike the ideal balance between paying for expenses and keeping taxes low.”

BRAC’s Impact on the County

This section discusses questions dealing with the base realignment and closure process that were not already mentioned in the press release’s introduction.

A question asked respondents the following: “Many of these new workers may seek to find housing in Anne Arundel County. Do you agree or disagree with the following proposals meant to accommodate such new workers?” Five items were presented, as shown on Table 11 and Chart 4.

Only two of the five items were clearly favored by the sample: the proposal to focus more resources for the redevelopment of the older northern and western parts of the county (75 percent agreeing) and the proposal to increase impact fees on new housing (69 percent).

Respondents were closely divided about the other three proposals. The first said that the county should “spend more on increasing public transportation to the area rather than improving the roads” (46 percent both agreed and disagreed, with the remainder providing no answer). The second proposed reducing the time it takes to get a building permit (45 percent agreed, 48 percent disagreed). The last suggestion about increasing housing densities was not a popular option, with 57 percent disagreeing and only 37 percent agreeing.

¹ Volunteered answers included “better use of taxes,” “county is too top heavy,” “have someone from corporate world show how to do business,” “re-evaluate some services without tax increases,” “bring slots to the county,” “whole system needs to be reviewed.”

Chart 4: Housing Proposals

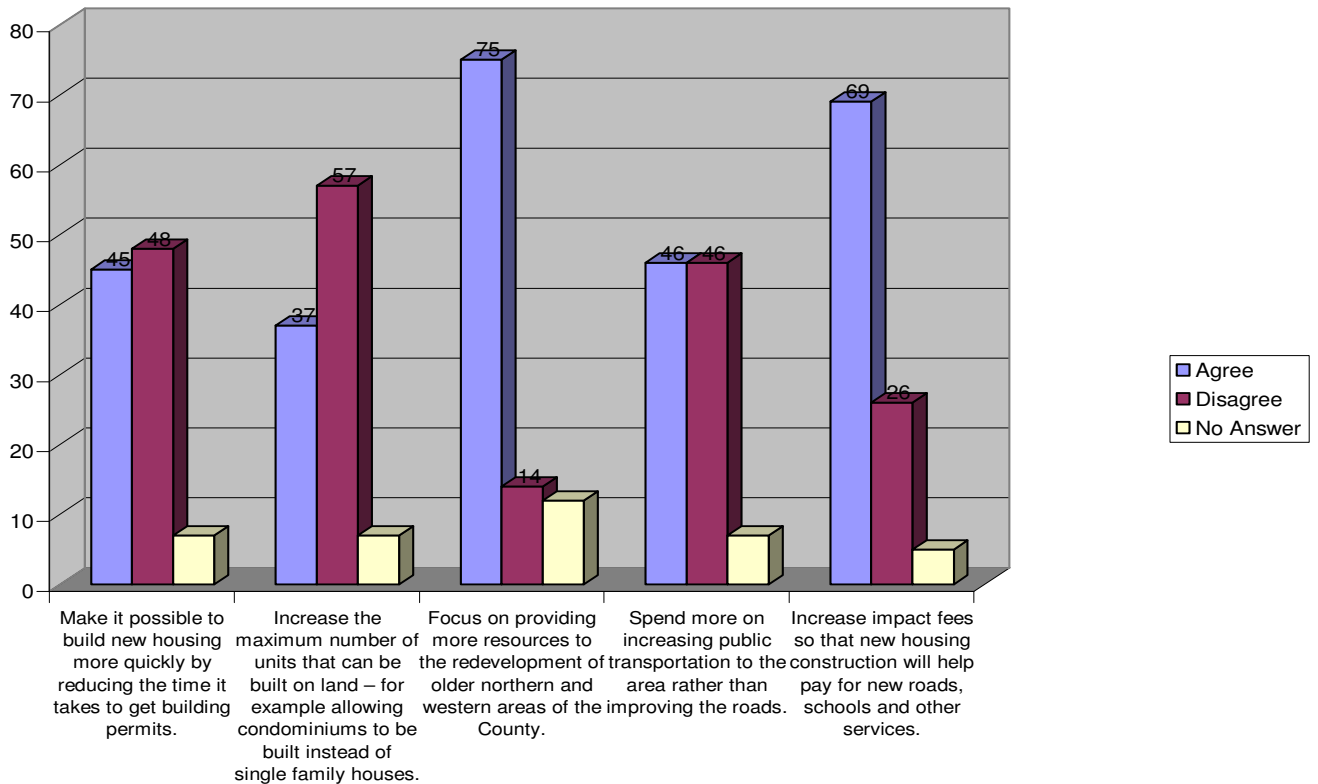


Table 11: Housing Proposals to Deal with Influx of New Workers

Response	Agree	Disagree	No Answer
Make it possible to build new housing more quickly by reducing the time it takes to get building permits.	45	48	7
Increase the maximum number of units that can be built on land – for example allowing condominiums to be built instead of single family houses.	37	57	7
Focus on providing more resources to the redevelopment of older northern and western areas of the County.	75	14	12
Spend more on increasing public transportation to the area rather than improving the roads.	46	46	7
Increase impact fees so that new housing construction will help pay for new roads, schools and other services.	69	26	5

“The public has some flexibility regarding the changes needed to accommodate growth in the Ft. Meade area, especially when presented with the thought of redeveloping older sections. But the public’s apprehension about growth as changing the character of the area through upzoning or not paying its own way were clearly communicated by these results,” Nataf said.

State and County Proposals

The survey asked about a set of laws being proposed or discussed in the Maryland General Assembly or the Anne Arundel County Council.

Table 12: State and Local Proposals

Proposal	Agree	Disagree	No answer
Banning all roadside solicitation on County roads	76	21	3
Increasing the cigarette tax by one dollar to help pay for increasing health insurance coverage to the uninsured.	72	27	1
Banning smoking in all restaurants and bars	68	29	3
Forcing all new cars sold in Maryland to comply with California pollution standards	51	40	9
Repealing the death penalty in Maryland	33	58	9

Four of the five measures received a generally favorable reception by the public. Especially favored were banning roadside solicitation (76 percent agreed), increasing the cigarette tax to pay for health coverage of the uninsured (72 percent agreed) and banning smoking in all restaurants and bars (68 percent agreed). Less strong was support for having all new cars sold in Maryland comply with California pollution standards (51 percent agreed). Only one-third agreed with the proposal to repeal the death penalty in Maryland. “These findings showed very little support for repealing the death penalty, a policy strongly advocated by the governor,” Nataf said.

President George W. Bush – Job Approval

The survey asked about President George W. Bush’s job approval. Since fall 2006, CSLI polls have closely tracked national trends as indicated by the Gallup Poll. The fall Gallup “approve” value was 37; CSLI’s poll had the President’s job approval at 39 percent. At the time of the spring poll, Gallup put President Bush’s job approval rating at 33 percent; CSLI’s survey had it at 34 percent.

Table 13: President Bush’s Job Approval

Issue	Fall 2005	Spring 2006	Fall 2006	Spring 2007
Approve	45	37	39	34
Disapprove	48	54	55	58
No answer	7	8	7	7
Total	100	99	101	99

“The similarity with national polling is striking, given the tendency for Anne Arundel County voters to generally support Republican candidates for president and governor by double-digit values – providing margins in excess of national results,” Nataf said.

As seen on Table 14, the predictable polarization among partisans was evident. The survey showed that there were more Republicans “defecting” to the “disapprove” category (33 percent) than Democrats defecting to the approved category (18 percent).

“Unaffiliated voters were midway between Democrats and Republicans in the percentage disapproving of Bush’s job performance, but with a clear majority disapproving. President Bush’s limited approval among Republicans also contributed to the low overall level of approval,” Nataf said.

Table 14: President Bush’s Job Approval by Party Registration

Issue	Overall	Democrats	Republicans	Unaffiliated
Approve	34	18	57	37
Disapprove	58	78	33	55
No opinion	7	3	9	8
Total	99	99	99	100

Flu Vaccinations and Concern about Avian Flu

The final section of the survey (other than demographic questions) dealt with health issues. The first set concerned flu vaccinations and started with the question, “Do you typically get a flu vaccination as winter approaches?” It was followed up with the question, “Did you get a flu vaccination this season?” and “Was this your first time getting the flu vaccination?” Finally, respondents were asked, “Where did you receive this vaccination?”

Table 15 shows that about half (49 percent) affirmed that they did typically receive a flu vaccination, although a notable minority (15 percent) refused to answer this question. Of those saying that they typically received the vaccination, 78 percent claimed to have received one this season (roughly 38 percent of the entire sample). Only a small minority said that this had been the first time (7 percent).

Table 15: Flu Vaccination Questions

Issue	Yes	No	No answer	Total
Do you typically get...	49	36	15	100
Did you get this season...	78	21	1	100
Was this your first time...	7	92	0	99

When asked about the location where they received the vaccination, nearly half pointed to the “doctor’s office” as the site of choice, with a similar percentage saying either “health department clinic” (14 percent) or “pharmacy/grocery store” (13 percent). Many others (23 percent) mentioned “some other place” such as a hospital, seniors’ center, or place of employment.

Table 16: Flu Vaccination Questions – Location Vaccine Received

Where do you get flu vaccination?	Percent
Doctor’s office	49
Health department clinic	14
Pharmacy/grocery store	13
Some other place	23
No answer	1
Total	100

A second focus within the health section was the avian flu: “How concerned are you about the possibility of an outbreak of avian (or bird) flu?” Most were not very concerned (56 percent).

Table 17: Concern about Avian Flu

How concerned are you about avian flu?	Percent
Very	12
Somewhat	31
Not very	56
No answer	1
Total	100

Methodology

The survey polled a random sample of 529 county residents who were at least 18 years old. Phone numbers were derived from a database of listed numbers as well as computer chosen, randomly assigned numbers. There was about a 4.25 percent statistical margin of error for the overall sample; the error rate was higher for subgroups such as “men” or “people with children in schools.” The dataset was weighted by gender to better represent the general population.

For information about this survey or CSLI, call Nataf at 410-777-2733 or visit the CSLI Web site at www2.aacc.edu/csli, where this press release is posted under “Recent Surveys.”

CSLI Semi-Annual Survey – Spring, 2007

1. What do you think is the most important problem facing the residents of Anne Arundel County at the present time? (DON'T READ THE LIST! Have them *volunteer* an answer)

Problem	Percent citing
Crime	9
Terrorism	1
Drugs (illegal drugs, use or sale)	2
Growth/overpopulation- too much development	16
Traffic congestion/transportation problems	11
Education, problems with schools	12
Taxes – too high	15
Inefficient government, wasteful spending	2
Corruption in government/politicians are bad	0
Environment (e.g., air or water pollution, saving the Bay)	6
Economy – (e.g., no jobs, high cost of living, business closing or losses)	8
Lack of affordable housing	4
Other answer (write in:	6
Unsure/No Answer	9

2. Overall, would you say that the county is headed in the right direction or in the wrong direction?

- (1) **Right** direction 52%
- (2) **Wrong** direction 27%
- (0) **Unsure** or don't know 21%

3. Thinking about our county's economy, how would you rate economic conditions in Anne Arundel County today -- excellent, good, only fair, or poor?

- (1) Excellent 12% (2) Good 59% (3) Only Fair 22% (4) Poor 4% (0)No Answer 3%

4. Thinking about public schools in Anne Arundel County, tell me which of these statements you agree with the most.

- (1) I favor a school system that is absolutely top quality regardless of the cost. 50%
- (2) I favor a school system that is of good quality but doesn't increase my taxes. 36%
- (3) Some other volunteered answer (Summarize: _____) 7%
- (0) No answer, don't know 7%

5. The superintendent of Anne Arundel County Public Schools recently proposed a 17 percent increase over last year's \$900 million school budget. The increase was meant to cover items such as increased security, the expansion of advanced learning programs, and higher teacher salaries.

Regarding this proposal, which of the following do you think would best serve the county?

- (1) Fully fund this proposal by raising some county taxes. 25%
- (2) Fully fund this proposal by reducing other county services. 20%
- (3) Partially fund this proposal to the extent possible without increasing taxes or reducing other county services. 43%
- (4) Some other answer (Summarize: _____) 6%
- (0) No Answer 7%

6.0 There has been some discussion lately of changing the method for selecting the Anne Arundel County school board.

How familiar are you with this general issue – very, somewhat or not very familiar?

- (1) Very familiar 12%
- (2) Somewhat familiar 25%
- (3) Not very familiar 61%
- (0) No answer 2%

6.1 Do you think that the county should continue appointing school board members by using a convention to nominate candidates and having the governor make the final choice, or should some other system be used?

- (1) Use current system 20%
- (2) Use some other system 64%
- (0) Don't know 16%



6.2 IF RESPONDENT SAYS "USE SOME OTHER SYSTEM" ASK:

Which of the following would you prefer as a new system:

- (1) an elected school board 42%
- (2) a school board selected by citizens representing elected officials and other groups in our county such as teachers' unions and the chamber of commerce. 40%
- (3) Some other volunteered answer: _____ 3%
- (0) DK/No Answer 16%

7.0 The county will be facing several budget challenges over the next few years including funding public schools, roads, changes in accounting rules, and increasing salaries to help recruit qualified government employees. Which of the following best reflects your views about how the county should deal with these challenges:

- (1) The county should pay for these expenses without raising any taxes or fees, even if it has to cut back on other public services. 31%
- (2) The county should pay for these expenses by a combination of cost reductions and tax increases. 55%
- (3) Some other volunteered answer (Summarize: _____) 8%
- (0) Don't know, no answer 7%

7.1 Generally, do you trust the county to find the right balance between paying for these expenses and keeping taxes as low as possible?

(1) Yes 42% (2) No 52% (0) No answer 6%

The next few questions deal with the base realignment and closure process (also known as BRAC) and its implications for Anne Arundel County.

8. First, had you previously heard that the BRAC process would be adding several thousand new jobs to Fort Meade in the western part of our county?

(1) Yes 70% (2) No 24% (3) Unsure 5% (0) No answer 2%

9. Thinking about the fact that many workers will need to commute to their new jobs, how well can Anne Arundel County’s transportation system accommodate them: very well, only somewhat well or not very well?

(1) Very well 10% (2) Somewhat well 38% (3) Not very well 44% (0) No answer 8%

10.0 Many of these workers may seek to find housing in Anne Arundel County. Do you agree or disagree with the following proposals meant to accommodate such new workers?

Proposal	Agree %	Disagree %	No answer %
10.1 Make it possible to build new housing more quickly by reducing the time it takes to get building permits.	45	48	7
10.2 Increase the maximum number of units that can be built on land – for example allowing condominiums to be built instead of single family houses.	37	57	7
10.3 Focus on providing more resources to the redevelopment of older northern and western areas of the County.	75	14	12
10.4 Spend more on increasing public transportation to the area rather than improving the roads.	46	46	7
10.5 Increase impact fees so that new housing construction will help pay for new roads, schools and other services.	69	26	5

11. Overall, do you think that the effects of the base realignment process as it affects our county will be mostly positive or mostly negative in affecting residents’ quality of life?

- (1) Mostly positive 55%
- (2) Mostly negative 22%
- (3) A little of both (only if respondent volunteers) 10%
- (4) Unsure 8%
- (0) No answer 4%

12.0 A set of new County and State laws has been discussed recently. Tell me whether you generally agree or disagree with the following proposals:

Proposal	Agree %	Disagree %	No answer %
12.1 Increasing the cigarette tax by one dollar to help pay for increasing health insurance coverage to the uninsured.	72	27	1
12.2 Banning all roadside solicitation on county roads	76	21	3
12.3 Forcing all new cars sold in Maryland to comply with California pollution standards	51	40	9
12.4 Banning smoking in all restaurants and bars	68	29	3
12.5 Repealing the death penalty in Maryland	33	58	9

13. Do you approve or disapprove of the way George W. Bush is handling his job as president?

(1) Approve 34% (2) Disapprove 58% (0) No answer 7%

The county's health department is interested in knowing about immunizations.

14.0 Do you typically get a flu vaccination as winter approaches?

(2) No 36% (1) Yes 49% (0) No answer 15%



14.1 Did you get a flu vaccination this season?

(1) Yes 78% (2) No (go to Q. 15) 21% (3) No answer 1%

14.2 Was this your first time getting the flu vaccination?

(1) Yes 7% (2) No 92% (0) No answer 0%

14.3 Where did you receive this vaccination?

(1) Doctor's office 49% (2) Health Department Clinic 14%
 (3) Pharmacy/Grocery store 13% (4) Some other place 23% (0) No Answer 1%

15. How concerned are you about the possibility of an outbreak of avian (or bird) flu – very concerned, somewhat concerned, not very concerned?

(1) Very concerned 12% (2) Somewhat concerned 31% (3) Not very concerned 56% (0) No answer 1%

We are almost done. The last few questions will help us to better understand your responses.

16. With which political party, if any, are you registered?

(1) Democratic 42% (4) None (NOT REGISTERED TO VOTE) 10%
 (2) Republican 33% (5) Other (e.g., Green Party) 2%
 (3) Independent 12% (0) No Answer 2%

17.0 Which of the following best describes your political beliefs: Liberal, Moderate or Conservative?

(1) Conservative 31% (2) Moderate 47% (3) Liberal 17% (0) Other, No Answer 5%

18. What is your age at this time? _____ (0) No Answer

Age range	Percent
18-30	7
31-40	21
41-50	22
51-60	26
61-65	9
66+	16
Total	101 (rounded)

19. I am going to read some categories relating to education. Please stop me when I reach the category in which the highest level of your formal education falls.

(1) less than a high school diploma 2%	(5) Completed college with a bachelor's degree 27%
(2) a high school diploma 12%	(6) post graduate work 28%
(3) some college 20%	(0) No Answer 0%
(4) Completed a 2 year associate college degree 11%	

20. I am going to read some categories relating to income. Please stop me when I reach the category in which your household income falls.

- (1) Less than \$30,000 6%
- (2) \$30,000 to \$50,000 9%
- (3) \$50,001 to \$75,000 18%
- (4) \$75,001-\$100,000 16%
- (5) \$100,001-\$150,000 23%
- (6) Over \$150,000 13%
- (0) No Answer 16%

21. Which of the following employment categories best describes your situation?

	Percent
Employed full time for a company in the private sector or self employed	47
Employed full time for government	14
Employed part-time	10
Retired	22
Unemployed and seeking a job	2
Unemployed and not seeking a job	4
No answer	2
Total	101

22. Regarding race, how would you describe yourself?

- (1) African American 8%
- (2) Caucasian 81%
- (3) Latino 3%
- (4) Asian 1%
- (5) Other or mixed racial background 4%
- (0) No Answer 3%

23. Regarding Religion, how would you describe yourself?

- (1) Non-practicing, Agnostic or Atheist 10%
- (2) Evangelical or born again Christian 10%
- (3) Protestant 24%
- (4) Catholic 30%
- (5) Jewish 3%
- (6) Other 17%
- (0) No Answer 6%

24. What is your current marital status?

(1) Single 12%	(2) Married 73%	(3) Separated or Divorced 9%	(4) Widowed 5%	(5) Other 0%	(0) Won't say 1%
-------------------	--------------------	------------------------------------	-------------------	-----------------	---------------------

25.0 Do you have any children in Anne Arundel public or private schools?

- (1) Yes 36%
- (2) No 62%
- (0) No answer 2%

25.1 If YES ASK: Would they be in public schools, private schools or both?

- (1) Public 55%
- (2) Private 16%
- (3) Both 7%
- (0) No answer 23%

SAY: That concludes our survey, thanks for participating.

Once the respondent hangs up, make sure to enter GENDER and ZIPCODE

26. Gender of respondent to whom you were speaking:

- (1) Male 50%
- (2) Female 50% (weighted) 43% Male 57% Female (unweighted)

27. Zipcode
27. Zipcode

		Frequency	Percent	Valid Percent	Cumulative Percent
Valid	20711.00	3	.6	.6	.6
	20724.00	4	.7	.7	1.3
	20733.00	5	.8	.8	2.1
	20751.00	2	.4	.4	2.5
	20758.00	1	.2	.2	2.7
	20764.00	3	.4	.4	3.1
	20776.00	6	1.0	1.0	4.1
	20778.00	1	.2	.2	4.3
	21012.00	47	8.0	8.1	12.4
	21020.00	1	.2	.2	12.6
	21032.00	9	1.5	1.5	14.2
	21035.00	9	1.6	1.6	15.8
	21037.00	24	4.1	4.1	19.9
	21054.00	17	3.0	3.0	22.9
	21060.00	20	3.5	3.5	26.4
	21061.00	52	8.9	8.9	35.3
	21076.00	11	1.9	1.9	37.1
	21090.00	8	1.3	1.3	38.4
	21108.00	20	3.5	3.5	42.0
	21112.00	1	.2	.2	42.2
	21113.00	21	3.6	3.6	45.8
	21114.00	35	5.9	6.0	51.8
	21122.00	61	10.5	10.6	62.4
	21140.00	7	1.2	1.2	63.6
	21141.00	1	.2	.2	63.9
	21144.00	37	6.3	6.3	70.2
	21146.00	57	9.7	9.8	79.9
	21160.00	1	.2	.2	80.1
	21226.00	13	2.1	2.2	82.3
	21401.00	54	9.3	9.4	91.6
	21402.00	1	.2	.2	91.8
	21403.00	29	4.9	5.0	96.8
	21409.00	16	2.8	2.8	99.6
210327.00	1	.2	.2	99.8	
211146.00	1	.2	.2	100.0	
	Total	579	99.3	100.0	
Missing	System	4	.7		
Total		583	100.0		