

Press Release: March 17, 2003
Center for the Study of Local Issues
Anne Arundel Community College

101 College Parkway, Arnold MD, 21012

Contact: Dan Nataf (410) 777-2733

Survey Finds Strong Support for Slots

According to a survey conducted March 10-13 by the Center for the Study of Local Issues (CSLI) at Anne Arundel Community College, County residents agree with the idea of “introducing slot machines at racetracks in Maryland” to help deal with the state’s budget deficit by more than a 2 to 1 margin (68% agree, 28% disagree, 4% no opinion).

The survey asked a set of other questions related to slots or gambling. As shown on table 1, respondents did not see gambling “as generally immoral” (only 20% agreeing), 64 percent agreed with the proposition that “Maryland loses revenue to neighboring states” that have legalized slots was a strong reason to approve it here, and 52 percent thought that “possible economic benefits from slots” were more important “than any possible negative social consequences. A plurality disagreed with the notion that “gambling industry puts too much pressure for passage” of slots legislation (46% disagreeing, 44% agreeing, 10% no opinion). However, a majority (56%) thought that “gambling interests should be prohibited from making political contributions,” implying a fear that politicians might be corrupted by such donations.

Over forty percent (41%) had used slot machines during the last two years. Dan Nataf, director of the Center for the Study of Local Issues, said “the large percentage of respondents having actually used slots probably accounts for the sizable majority in favor of introducing them in Maryland. Since they have already used them, they see no strong reason to keep slots out of the state.”

Not all results favored the introduction of slots or the rationale offered for doing so. There was about an even split between those who thought, “horse racing in Maryland is an industry which should be subsidized with earnings from slot machines” (46% agreed, 47% disagreed, 6% no opinion). A small plurality thought, “gambling addiction is a serious problem that will accompany slots” (48% agreeing, 47% disagreeing, 5% no opinion). Over one-fourth (27%) knew someone “who has an addiction to any form of gambling.” Nataf remarked, “While the public may feel that the state’s current economic situation and competition from neighboring states makes a compelling case for slots, a sizable part of the public also feels that it may worsen what might be considered an already serious incidence of gambling addiction.”

Table 1: “The governor has presented legislation that would allow slot machines at some Maryland racetracks. Please answer the following questions regarding this proposal.”

Do you agree or disagree...	Agree	Disagree	Don't know	N
Do you think that horse racing in Maryland is an industry which should be subsidized with earnings from slot machines?	46	47	6	336
Do you thinking that the gambling industry puts too much pressure for passage of this legislation?	Yes 44	No 46	10	336
Do you think that gambling interests should be prohibited from making political contributions?	Yes 56	No 38	6	332
Do you think that gambling is generally immoral?	Yes 20	No 78	2	334
Do you think that gambling addiction is a serious problem that will accompany slots in Maryland?	Yes 48	No 47	5	333
Do feel that the possible economic benefits from slots are more or less important than any possible negative social consequences?	More important 52	Less important 39	9	333
Does the idea that Maryland loses revenue to neighboring states that have legalized slots seem like a strong reason to approve it here?	Yes 64	No 32	4	332
Have you used slot machines during the last two years?	Yes 41	No 58	0	333
Have you played the “lotto” during the last two years?	Yes 61	No 38	0	333
Have you gambled at race tracks during the last two years?	Yes 14	No 86	0	332
Do you know anyone who has an addiction to any form of gambling?	Yes 27	No 72	1	333
Do you generally agree or disagree with the introduction of slot machines at Maryland race tracks	69	29	2	332

Most Important Problem

Last fall, the sniper shootings in Maryland and Virginia led to a notable increase in the percent of citizens saying that “terrorism” was the most important County problem (11% in October 2002, up from 1% in March 2002). This spring, “terrorism” dropped significantly to only two percent. According to the Center’s director, “fear of terrorism seems strongly related to recent events. The lack of extraordinary situations in this region since the alleged snipers were caught has calmed public anxieties somewhat.”

Table 2: Percentage Citing Item as County’s “Most Important Problem”¹

Problem	Circle one
Crime	4
Terrorism	2
Drugs	3
Growth/overpopulation- too much development	12
Traffic congestion/problems	9
Education, problems with schools	17
Taxes – too high	9
Inefficient government, wasteful spending	2
Corruption in government/politicians are bad	0
Environment (e.g., air or water pollution, saving the Bay)	5
Economy – (e.g., no jobs, high cost of living, business closing or losses)	14
Other answer	8
Unsure/No Answer	13

The survey also found a significant jump in the percentage of respondents pointing to economic problems, up from 3 percent to 14 percent. “This is the highest level of concern with the economy that CSLI has registered since at least 1995” observed director Nataf.

The other key issues either held steady or showed small declines. Growth and development was down slightly from 15 percent last fall to 12 percent this spring. Education (19% last fall, 17% this spring), and traffic congestion (10%, 9%) joined with taxes (7%, 9%) as items experiencing little change.

Crime dropped to only four percent (down from 9%), with the combined indicator crime/drugs reaching its lowest point in seven years (7%). The percentage citing the environment dropped from seven to five percent. (See tables 2 and 3 as well graph 1). (Note that Table 3 combines “growth” and “transportation” into “Growth” as well as “crime” and “drugs” into “Crime” for reporting and comparison purposes).

¹ All values in tables are percentages unless otherwise noted. Tables may not equal 100% due to rounding. The questionnaire is attached, with percentages included instead of the original answer values.

Graph 1: Most Important Issue - Trends

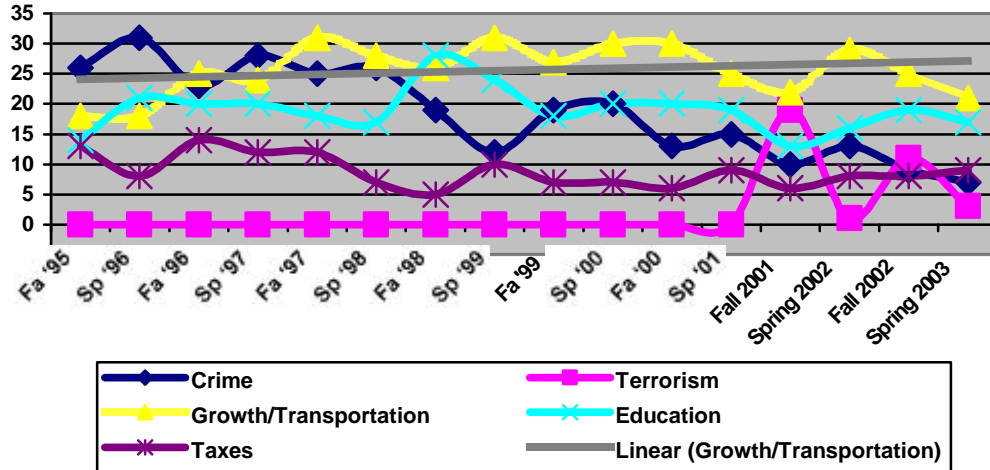


Table 3: “Most Important Problem facing Residents” Fall 1995 to Fall 2001

Problem	Fa '95	Sp '96	Fa '96	Sp '97	Fa '97	Sp '98	Fa '98	Sp '99	Fa '99	Sp '00	Fa '00	Sp '01	Fa '01	Sp '01	Fa '02	Sp '03
Crime	26	31	23	28	25	26	19	12	19	20	13	15	10	13	13	7
Terrorism	--	--	--	--	--	--	--	--	--	--	--	--	18	1	11	2
Growth/Transportation	18	18	25	24	31	28	26	31	27	30	30	25	22	28	25	21
Education	14	21	20	20	18	17	28	24	18	20	20	19	13	16	19	17
Taxes	13	8	14	12	12	7	5	10	7	7	6	9	6	8	8	9

Terrorism/Emergency Preparedness

The spring 2003 survey included two questions specifically about terrorism, along with two others about emergency preparedness.

The first question on terrorism dealt with the public’s perception of the likelihood of a “terrorist attack on a location within Anne Arundel County over the next year.” As shown on table 4, the percentage of respondents thinking that a terrorist attack in the County was “very likely” was nearly unchanged at 15 percent (from 16% last fall). The percentage saying “not very likely” rose a bit to 41 percent from 37 percent. “While last fall, the sniper shootings were the key event triggering fears of terrorism, it is harder to say exactly why the perceived threat of attack has stayed the same. Fears of war with Iraq and a possible terrorist backlash might be keeping the public’s level of concern about as high as it was a year ago,” Nataf speculated.

Table 4: Likelihood of Terrorist Attack in Anne Arundel County

	Fall 2001	Spring 2002	Fall 2002	Spring 2003
Very likely	25	10	16	15
Somewhat likely	43	36	39	40
Not very likely	29	52	37	41
Don't know	3	2	8	4
Total	100	100	100	100

Residents were a bit less optimistic that local government could effectively respond in the event of a terrorist attack than was the case last fall, with the percentage saying that local authorities were “very prepared” dropping from 16 percent to 10 percent. The percentage saying “not very prepared” reached a new high (37%). (See table 5).

Table 5: How prepared are local authorities in event of a terrorist attack

	Fall 2001	Spring 2002	Fall 2002	Spring 2003
Very prepared	13	8	16	10
Somewhat prepared	47	49	52	48
Not very prepared	30	35	22	37
Don't know, no answer	11	8	10	4
Total	101	100	100	100

The spring survey asked a subset of fall's questions about residents' preparations for “an emergency event such as a terrorist attack or a natural emergency such as a hurricane.” There was a small increase in the percentage saying that they had developed a family plan of action (see table 7), and virtually no change in the percentage having reviewed County brochure on emergency preparedness (See table 8).

Table 7: Developed a family plan of action which all family members understand

	Fall 2002	Spring 2003
Yes	38	43
No	55	51
Don't know	7	6
Total	100	100

Table 8: Obtained and reviewed the brochure from the County called the “Guide to Emergency Preparedness”

	Fall 2002	Spring 2003
Yes	21	20
No	69	68
Don’t know	10	12
Total	100	100

Tax/Revenue Cap

The percentage of respondents agreeing that the tax/revenue cap has “hurt the ability of the County to provide services to its citizens” was unchanged from fall 2003.² (See table 9).

Nataf said “these findings suggest that the rise witnessed in fall was not an aberration.”

Table 9: Percentage Agreeing that Revenue Cap has Hurt Ability of County to Provide Services: Spring 1996 to Fall 2002

Question/Survey	Sp '96	Fa '96	Sp '97	Fa '97	Sp '98	Fa '98	Sp '99	Fa '99	Sp '00	Fa '00	Sp '01	Fa '01	Sp '02	Fa '02	Sp '03
% Agreeing	43	38	29	37	28	27	27	30	24	25	29	25	21	32	32

Economic Conditions and Issues

The downturn in public perceptions of the state of the local economy was affirmed by the results of the spring survey. The combined total saying either “excellent” or “good” declined from 66 percent to 55 percent, with the largest growth among those saying “fair” (from 27% to 36%). “This reinforces the finding about the declining state of the economy indicated by the rise in numbers saying ‘the economy’ when asked about the ‘most important problem,’” Nataf affirmed.

Table 10: Economic Conditions

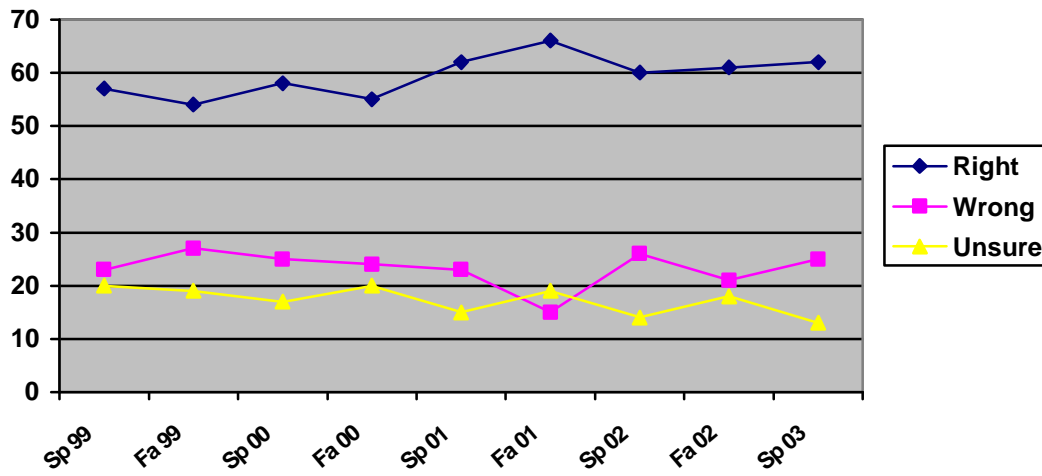
	Spring 2002	Fall 2002	Spring 2003
Excellent	14	6	5
Good	60	60	50
Fair	21	27	36
Poor	4	4	6
Don’t know	1	3	2
Total	101	100	99

² 51% said that the tax/revenue cap had *not* hurt the ability of the County to provide services, while another 17% had no opinion.

Appraisals of the County and its Problems

The survey included a CSLI benchmark question: “Overall, would you say that the County is headed in the right direction or in the wrong direction?” Graph 3 shows that the results have not varied much, hovering around 60 percent. (Spring results: 62% said “right,” 25% said “wrong” and 13% were unsure). A significant majority of the public continues to perceive the County as going in the right direction.

Graph 3: County - Right or Wrong Direction



The County and the Future

Table 11 shows a list of issue areas that was presented to residents who were asked to indicate whether the item would be better, the same or worse by the year 2010. Respondents seemed to think that, other than the economy, “intangibles” such as family or spiritual life would be most improved in seven years. More tangible items such as traffic congestion, taxes and crime were perceived as more likely to get worse.

Table 11: Thinking about this County’s future, please tell me whether you think the following things will be better, about the same or worse in 2010.

	Better	About the same	Worse	Unsure	No answer	N
Economic conditions	35	34	26	4	1	347
The overall quality of life in the County	35	45	18	1	0	351
Family life	32	44	19	3	1	350
Spiritual or religious life	31	48	12	6	4	347
Public schools	30	32	34	4	1	352
Growth and development	28	23	44	5	1	349
Health care	21	36	37	5	1	348
General responsiveness of County government to citizens’ needs	20	50	26	2	2	352
Ethics in local government	18	46	28	6	2	351
Water and air quality	16	28	53	2	1	350
Crime	15	37	45	2	1	352
Traffic congestion	6	8	86	0	0	352
Local taxes	5	22	69	2	1	352

New Anne Arundel County Public School Programs

The survey queried residents about two new programmatic changes that the public schools were instituting. Table 12 shows both the percentage saying that they had heard of the program and the percentage approving each of them.

Table 12: Percentage having heard of Program; Percentage Approving

	Heard of it	Have NOT heard of it	Approve	Disapprove	Unsure
The change to a four-period day for all middle and high schools	63	37	41	41	18
The introduction of a new “International Baccalaureate program” which would be a demanding academic program run at a couple of magnet schools in the County and only open to qualifying students.	31	69	54	23	23

The public was much more likely to have heard of the change to a four-period day (63%) than the “International Baccalaureate” program (31%). Conversely, support for the latter ran higher (54% approving) than the former (41% approving).

Solving the State Budget Deficit

A battery of questions dealt with approaches that might be used to help reduce the state budget deficit. Table 13 summarizes the results.

Table 13: Support for Various State Approaches (in percent)

Do you agree or disagree...	Agree	Disagree	Don't know
Reductions in spending on higher education	21	77	2
Reductions in spending on road assistance to local government	30	62	8
Reductions in spending on programs to preserve open space	36	59	6
Increases in spending on public schools despite the state's deficit	72	25	3
Increasing the gas tax by 1 or 2 cents.	49	48	2
Increasing the sales tax by 1 cent.	51	48	1
Increasing income taxes just enough to cover the deficit without cutting programs	37	60	3
Introducing slot machines at racetracks in Maryland	67	29	4

The public was reluctant to reduce spending in the three areas in which reductions were suggested: higher education (77% disagreeing), road assistance to local government (62%) and programs to preserve open space (59%).

The public was equally generous concerning the public schools, as 72 percent agreed that funding should be increased despite the state's budget woes.

Surprisingly, the public also showed itself predisposed to some revenue enhancements as a small majority (51%) supported increasing the sales tax by one percent, while a very small plurality (49%) was willing to see the gas tax rise by one or two cents. Only 37 percent favored "increasing income taxes just enough to cover the deficit without cutting programs" however. The most widely supported revenue enhancement was "the introduction of slot machines at racetracks" with 67 percent favoring it.³

The survey asked two open-ended questions related to the state's budget situation. The first asked respondents, "do you know any programs or areas of spending which you think should be cut back?" A wide variety of suggestions were made, mostly focusing on government employee and politician's salaries and "perks" (for a combined total of 35% of all citations) wasteful spending, inefficient operations, and cutbacks among some programs such as "welfare," recreation and parks, or "beautification" (these totaled 39%).

³ A version of this question was asked twice to confirm respondents' feelings. In both cases, a similar percentage (67%, 69%) affirmed their support for the introduction of slots into Maryland.

The second open-ended question asked respondents to identify “any specific taxes or fees that should be increased in order to help balance the state’s budget.” An assortment of ideas was presented, although the clear favorite was increasing taxes on alcohol and cigarettes (cited by 40% of those who offered any thought). This tax was followed by recommendations for a sales tax increase (17%) or a higher gas tax (13%). Other ideas mentioned (all below 5%) included an entertainment tax, an increase in the property tax, an increase in the sales tax, slots, a tax on the wealthy and an increase in user fees and fines.

Community Associations

A part of the survey asked respondents whether they belonged to a community association (60% responded affirmatively). The residents were then asked whether their community associations provided or maintained the items shown on table 14.

Table 14: Items provided or maintained by Community Associations (in percent)

	Yes	No	Don’t know
A newsletter	88	12	0
A recreational area	78	22	0
Landscaping of common areas	76	22	2
A community swimming pool	37	62	1
A clubhouse	36	62	2
Boat launching facilities	34	66	0
Other access to the waterfront	35	63	2

Almost all community associations provided a newsletter (88%); many provided recreational areas (78%) and landscaping of common areas (76%). A significant but much smaller number provided swimming pools (37%), clubhouses (36%), boat launching facilities (34% or “other access to the waterfront” (35%). The median yearly cost for membership in the community association was \$100, although the average was higher (\$232) due to some communities having very high charges.

“An important part of the public’s access to recreational facilities is provided by these private associations. The provision of such facilities may create less of an interest in some parts of the public in having the County provide services they are already receiving in their communities,” Nataf pointed out.

Methodology

The survey polled a random sample of 352 county residents who were at least 18 years old. Phone numbers were derived from a database of listed numbers as well as computer chosen, randomly assigned numbers. The statistical margin of error for the overall sample was about five percent

For information about this survey or CSLI, call Dan Nataf at 410-777-2733, or visit the CSLI web site at www.aacc.edu/csli where this press release is posted under “Recent Surveys.”

CSLI Survey, Spring 2003

1.0 What do you think is the most important problem facing the residents of Anne Arundel County at the present time? (DON'T READ THE LIST! Have them volunteer an answer)

Problem	Circle one
Crime	4
Terrorism	2
Drugs	3
Growth/overpopulation- too much development	12
Traffic congestion/problems	9
Education, problems with schools	17
Taxes – too high	9
Inefficient government, wasteful spending	2
Corruption in government/politicians are bad	0
Environment (e.g., air or water pollution, saving the Bay)	5
Economy – (e.g., no jobs, high cost of living, business closing or losses)	14
Other answer	8
Unsure/No Answer	13
	98

2.0 Overall, would you say that the County is headed in the right direction or in the wrong direction? (N=351)

- (1) **Right** direction 62%
- (2) **Wrong** direction 25%
- (0) **Unsure** or don't know 13%

3.0 Some people believe that the County's ability to provide certain services has declined due to the County's cap on revenue from property taxes. Others think it hasn't affected services.

Do you think the revenue cap has hurt the ability of the County to provide services to its citizens? (N=352)

- (1) **Yes** 32%
- (2) **No** 51%
- (0) **Don't Know, No Answer** 17%

4.0 Thinking about our County's economy, how would you rate economic conditions in Anne Arundel County today -- excellent, good, only fair, or poor? (N=352)

(1) Excellent 5% (2) Good 50% (3) Only Fair 36% (4) Poor 6% (0) Don't Know, No Answer 2%

Thinking about the this County's future, please tell me whether you think the following things will be better, about the same or worse in 2010.

	Better	About the same	Worse	Unsure	No answer	N
5.1 Traffic congestion	6	8	86	0	0	352
5.2 Local taxes	5	22	69	2	1	352
5.3 Crime	15	37	45	2	1	352
5.4 Public schools	30	32	34	4	1	352
5.5 Ethics in local government	18	46	28	6	2	351
5.6 Growth and development	28	23	44	5	1	349
5.7 Water and air quality	16	28	53	2	1	350
5.8 Health care	21	36	37	5	1	348
5.9 Economic conditions	35	34	26	4	1	347
5.10 Family life	32	44	19	3	1	350
5.11 Spiritual or religious life	31	48	12	6	4	347
5.12 General responsiveness of County government to citizens' needs	20	50	26	2	2	352
5.13 The overall quality of life in the County	35	45	18	1	0	351

The public schools are under new leadership. I would like to ask you about two school policies have been in the news. First tell me whether you have heard of this policy, then whether you approve of it.

	N=343 / 333		N=328/ 307		
	Heard of it	Have NOT heard of it	Approve	Disapprove	Unsure
5.14/5.14a The change to a four-period day for all middle and high schools	63	37	41	41	18
5.15/5.15a The introduction of a new "International Baccalaureate program" which would be a demanding academic program run at a couple of magnet schools in the County and only open to qualifying students.	31	69	54	23	23

The State is facing a large deficit for the coming fiscal year. Please tell me whether you generally agree or disagree with proposals to deal with this deficit and balance the state's budget.

Do you agree or disagree...	Agree	Disagree	Don't know	N
6.1 Reductions in spending on higher education	21	77	2	344
6.2 Reductions in spending on road assistance to local government	30	62	8	342
6.3 Reductions in spending on programs to preserve open space	36	59	6	340
6.4 Increases in spending on public schools despite the state's deficit	72	25	3	340
6.5 Increasing the gas tax by 1 or 2 cents.	49	48	2	339
6.6 Increasing the sales tax by 1 cent.	51	48	1	341
6.7 Increasing income taxes just enough to cover the deficit without cutting programs	37	60	3	337
6.8 Introducing slot machines at racetracks in Maryland	67	29	4	340

7.0 Generally speaking do you think that greater emphasis should be placed on cutting programs or raising taxes to try to deal with the state deficit? (N=340)

Cutting programs.	40
Increasing taxes	36
Don't know	24

7.1 Do you know any programs or areas of spending which you think should be cut back?

Broad categories of items mentioned	Percent	N
Reduce government salaries	15	13
Reduce politicians salaries	12	10
Reduce government perks	7	6
Cut waste, administration	11	9
Cut back on specific programs	39	33
Other miscellaneous	16	14
Overall	100	85

7.2 Do you know of any specific taxes or fees that should be increased in order to help balance the state's budget?

Broad categories of items mentioned	Percent	N
Alcohol/cigarette taxes	40	62
Sales tax	17	26
Gas tax	13	20
User fees	7	11
Income tax	4	7
Business	4	6
Luxury	3	4
Slots	3	4
Property	3	4
Other	3	4
Increase fines	2	3
Gambling tax	2	3
Entertainment	1	2
	102*	156

Note: total exceeds 100 percent due to rounding

The governor has presented legislation that would allow slot machines at some Maryland racetracks. Please answer the following questions regarding this proposal.

Do you agree or disagree...	Agree	Disagree	Don't know	N
8.1 Do you think that horse racing in Maryland is an industry which should be subsidized with earnings from slot machines?	46	47	6	336
8.2 Do you think that the gambling industry puts too much pressure for passage of this legislation?	Yes 44	No 46	10	336
8.3 Do you think that gambling interests should be prohibited from making political contributions?	Yes 56	No 38	6	332
8.4 Do you think that gambling is generally immoral?	Yes 20	No 78	2	334
8.5 Do you think that gambling addiction is a serious problem that will accompany slots in Maryland?	Yes 48	No 47	5	333
8.6 Do you feel that the possible economic benefits from slots are more or less important than any possible negative social consequences?	More important 52	Less important 39	9	333
8.7 Does the idea that Maryland loses revenue to neighboring states that have legalized slots seem like a strong reason to approve it here?	Yes 64	No 32	4	332
8.8 Have you used slot machines during the last two years?	Yes 41	No 58	0	333
8.9 Have you played the "lotto" during the last two years?	Yes 61	No 38	0	333
8.10 Have you gambled at race tracks during the last two years?	Yes 14	No 86	0	332
8.11 Do you know anyone who has an addiction to any form of gambling?	Yes 27	No 72	1	333
8.12 Do you generally agree or disagree with the introduction of slot machines at Maryland race tracks	69	29	2	332

9.0 In your opinion, how likely is a terrorist attack on a location within Anne Arundel County over the next year, very likely, somewhat likely or not very likely? (N=331)

- (1) **Very likely** 15%
- (2) **Somewhat likely** 40%
- (3) **Not very likely** 41%
- (4) **Unsure** 4%
- (0) **No answer** 0%

10.0 How prepared do you believe local authorities to be in the event of a terrorist attack in Anne Arundel County, very prepared, somewhat prepared, not very prepared? (N=331)

- (1) **Very prepared** 10%
- (2) **Somewhat prepared** 48%
- (3) **Not very prepared** 37%
- (4) **Unsure** 4%
- (0) **No answer** 0 %

11.0 Have you done any of the following to prepare for an emergency such as a terrorist attack or a natural emergency such as a hurricane?

N=328/328

	Yes	No	Unsure
11.1 Developed a family plan of action which all family members understand	43	51	6
11.2 Obtained and reviewed the brochure from the County called “Guide to Emergency Preparedness?”	20	68	12

We are almost done. The last few questions will help us to better understand your responses.

12.0 If you currently have an Internet account that you use from your home, what type of connection do you have? N=327

- (1) *Don't have an Internet connection at home* 17%
- (2) **Regular dial-up** 43%
- (3) **DSL** 10%
- (4) **Cable modem** 28%
- (5) **Satellite** 1%
- (6) **Other** 1% (0) **Don't know** 2%

13.0 With which political party, if any, are you registered? (N=329)

- (1) Democratic 38%
- (2) Republican 34%
- (3) Independent 10%
- (4) None 28%
- (5) Other 1%
- (0) No Answer 2%

14.0 Which of the following best describes your political beliefs: Liberal, Moderate or Conservative? (N=329)

- (1) Liberal 19%
- (2) Moderate 52%
- (3) Conservative 23%
- (0) Other, No Answer 6%

15.0 I am going to read some categories of age classifications. Please stop me when I reach the category in which your age falls. (N=327)

- (1) 18 to 29 12%
- (2) 30 to 44 35%
- (3) 45 to 59 32%
- (4) 60 or more 18%
- (0) No Answer 2%

16.0 I am going to read some categories relating to education. Please stop me when I reach the category in which the highest level of your formal education falls.

(N=326)

(1) less than a high school degree	2%
(2) a high school degree	15%
(3) some college or a two-year degree	37%
(4) completed college with a bachelor's degree	26%
(5) post graduate work	20%
(0) No Answer	1%

17.0 I am going to read some categories relating to income. Please stop me when I reach the category in which your household income falls. (N=326)

- (1) Less than \$30,000 9%
- (2) \$30,000 to \$50,000 19%
- (3) \$50,000 to \$75,000 22%
- (4) \$75,000-\$100,000 19%
- (5) Over \$100,000 22%
- (0) No Answer 10%

18.0 Regarding race, how would you describe yourself? (N=327)

- (1) Black 9%
- (2) White 84%
- (3) Hispanic 2%
- (4) Asian 1%
- (5) Other or mixed racial background 2%
- (0) No Answer 2%

19.0 Regarding Religion, how would you describe yourself? (N=325)

- (1) Non-practicing, Agnostic or Atheist (skip to question 20.0) 17%
- (2) Protestant 29%
- (3) Catholic 32%
- (4) Jewish 2%
- (5) Other 21%

19.1 If R says anything other than (1), ASK:

Would you consider yourself very religious, somewhat religious or not very religious? (N=274)

- (1) Very religious 25%
- (2) Somewhat religious 57%
- (3) Not very religious 16%
- (0) No answer 2%

20.0 What is your current marital status? (N=328)

(1) Single 16%	(2) Married 65%	(3) Separated or Divorced 8%	(4) Widowed 8%	(5) Other 1%	(0) Won't say 2%
-------------------	--------------------	---------------------------------	-------------------	-----------------	---------------------

21.0 How long have you lived in Anne Arundel County: 20 years (median)
(N=352)

Residence in years	Percentage
0-5	21
6-10	12
11-15	10
16-20	12
21-25	8
26-30	13
Over 30	25

22.0 Which of the following best describes your home: A detached single family home, a townhouse, a condo, or an apartment?

(1) Detached single family	(2) Townhouse	(3) Condo	(4) Apartment	(0) No answer
76%	12%	5%	6%	1%

23.0 Do you own your home or is it rented? (N=326)

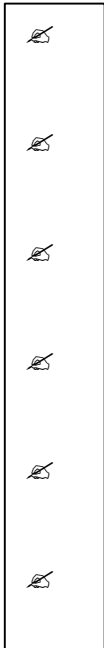
- (1) Owned 85%
- (2) Rented 14%
- (0) No answer 1%

24.0 Does your home belong to a community association? (N=320)

- (1) Yes 60%
- (2) No 37% (skip to question 26)
- (0) Don't know 3%

IF YES: Which of the following does your community association provide or maintain? (N=+/- 187)

	Yes	No	Don't know
25.1 A newsletter	88	12	1
25.2 A recreational area	78	23	0
25.3 Landscaping of common areas	76	22	2
25.4 A community swimming pool	37	62	1
25.5 A clubhouse	36	62	2
25.6 Boat launching facilities	34	66	1
25.7 Other access to the waterfront	35	63	2
25.9 Do you know roughly how much you pay each year to be a part of the community association?	Enter amount: \$0-25=25% \$26-100=25% \$101-300=25% \$301+ = 25% Mean: \$232 Median: \$100		



26.0 How many children living at home currently attend public or private school?

	Circle #s below ?
26.1 Public (N=287)	0 63% 1 17% 2 15% 3 2% 4 1% More than 4 ⁵ 1%
26.2 Private (N=197)	0 81% 1 10% 2 8% 3 1% 4 0% More than 4 ⁵ 0%

SAY: That concludes our survey, thanks for participating

Once the respondent hangs up, make sure to enter GENDER and ZIPCODE

27.0 Gender of respondent to whom you were speaking:

- (1) Male 37%
- (2) Female 63%

28.0 Zipcode _____

V28.0

	Frequency	Percent	Valid Percent	Cumulative Percent
Valid	3	.9	.9	.9
19260	1	.3	.3	1.1
20711	3	.9	.9	2.0
20724	2	.6	.6	2.6
20751	2	.6	.6	3.1
20755	4	1.1	1.1	4.3
20764	2	.6	.6	4.8
20776	1	.3	.3	5.1
20778	1	.3	.3	5.4
20779	1	.3	.3	5.7
21012	12	3.4	3.4	9.1
21032	6	1.7	1.7	10.8
21035	8	2.3	2.3	13.1
21037	14	4.0	4.0	17.0
21054	3	.9	.9	17.9
21056	1	.3	.3	18.2
21060	9	2.6	2.6	20.7
21061	41	11.6	11.6	32.4
21076	4	1.1	1.1	33.5
21077	1	.3	.3	33.8
21090	11	3.1	3.1	36.9
21108	11	3.1	3.1	40.1
21113	14	4.0	4.0	44.0
21114	16	4.5	4.5	48.6
21122	53	15.1	15.1	63.6
21140	5	1.4	1.4	65.1
21144	26	7.4	7.4	72.4
21146	27	7.7	7.7	80.1
21401	52	14.8	14.8	94.9
21403	18	5.1	5.1	100.0
Total	352	100.0	100.0	